

## Features

- 75 Ohm
- Vertical Plug-in Unit
- RoHS Compliant
- Lead Free

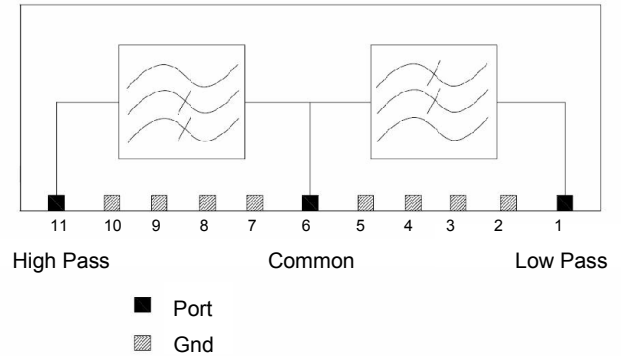
## Description

- M/A-COM's MAFL-011027 is a vertical plug-in Diplex Filter unit designed for CATV applications.

## Recommended Maximum Ratings

Parameter	Value
Storage Temperature	-40°C to +85°C
Operating Temperature	-40°C to +85°C
DC Current	30mA
RF Power	250mW

## Functional Schematic



## Pin Configuration

Function	Pin Number
Input Port	6
Low Pass Output Port	1
High Pass Output Port	11
Ground	2 - 5, 7 - 10
Not connected	-

## Electrical Specifications: $T_A = 25^\circ\text{C}$ , $Z_0 = 75\Omega$

Parameter	Units	Typ	Min	Max
Insertion Loss 85MHz	dB	1.2	-	1.5
Insertion Loss 102MHz	dB	1.3	-	1.6
Insertion Loss 770MHz	dB	0.3	-	0.6
Insertion Loss 862MHz	dB	0.4	-	0.6
Insertion Loss 1002MHz	dB	0.5	-	1.0
Input Return Loss				
5 - 50MHz	dB	22	21	-
50- 85MHz	dB	18	15	-
102 -140MHz	dB	23	20	-
140 - 1002MHz	dB	19.5	18	-
Isolation				
5 - 85MHz	dB	53	47	-
85 - 105MHz	dB	31.5	28	-
102 - 195MHz	dB	52	47	-
195 - 600MHz	dB	48	44	-
600 - 770MHz	dB	41	35	-
770 - 1002MHz	dB	36	30	-

# MAFL-011027

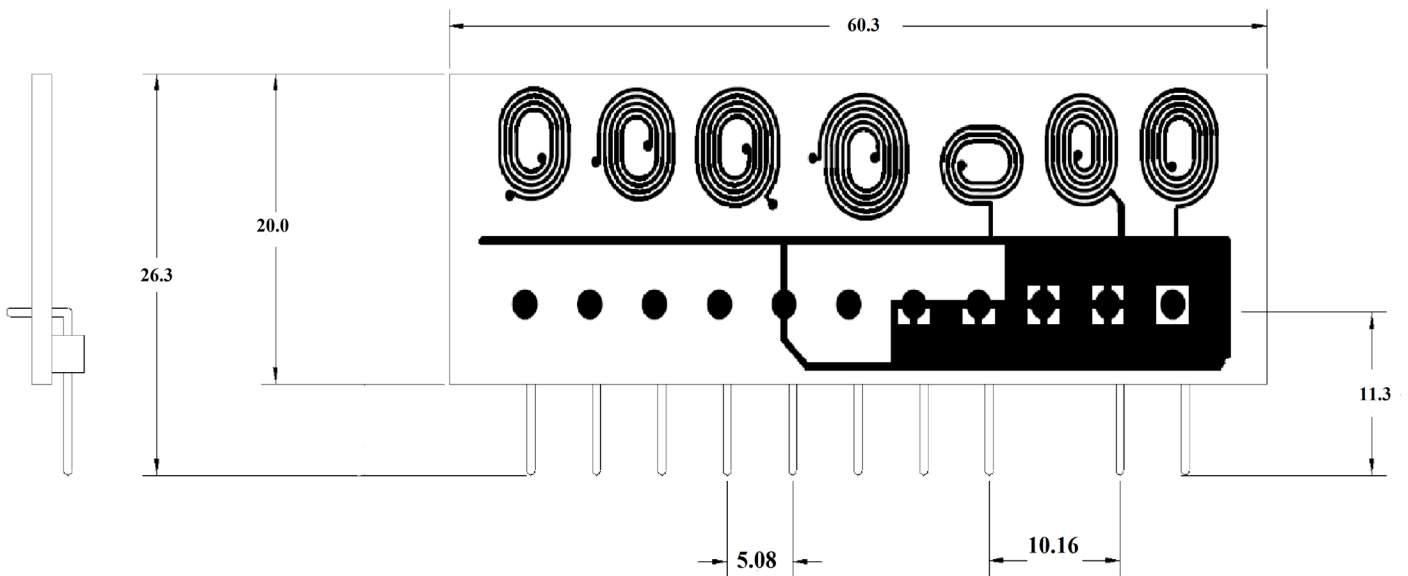


CATV Diplex Filter  
5 - 85/ 102 - 1002MHz

Rev. V2

## Dimensional Data (mm):

Tolerance: +/- 0.2mm



# MAFL-011027

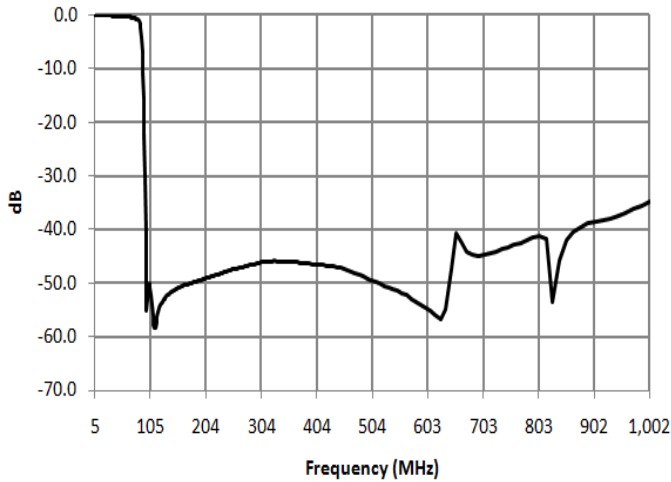


CATV Diplex Filter  
5 - 85/ 102 - 1002MHz

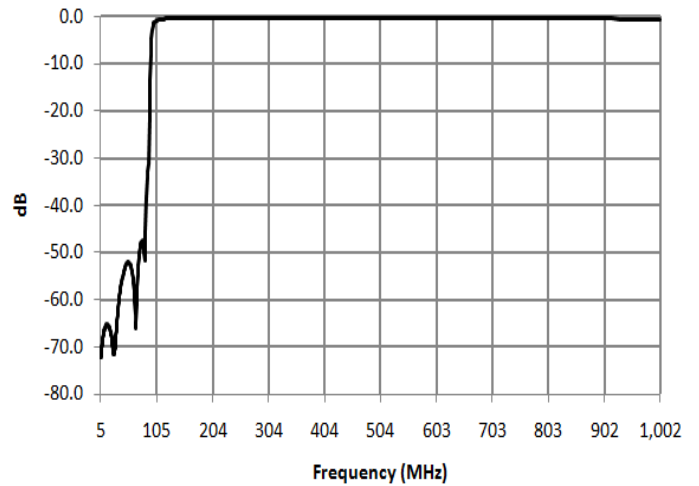
Rev. V2

## Typical Performance Curves at +25°C

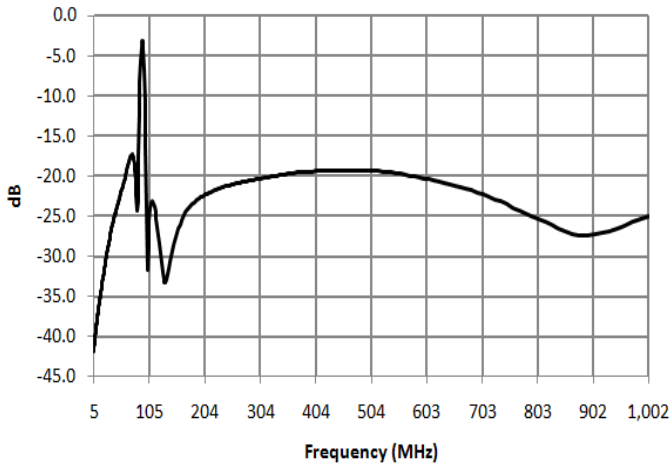
Low Pass Insertion Loss



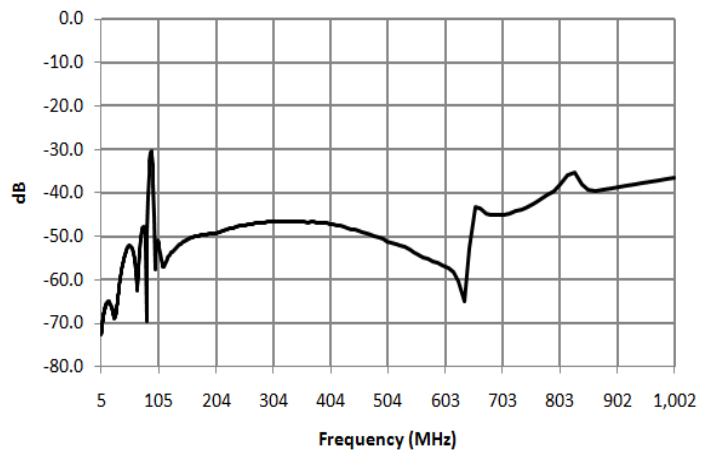
High Pass Insertion Loss



Return Loss



Isolation



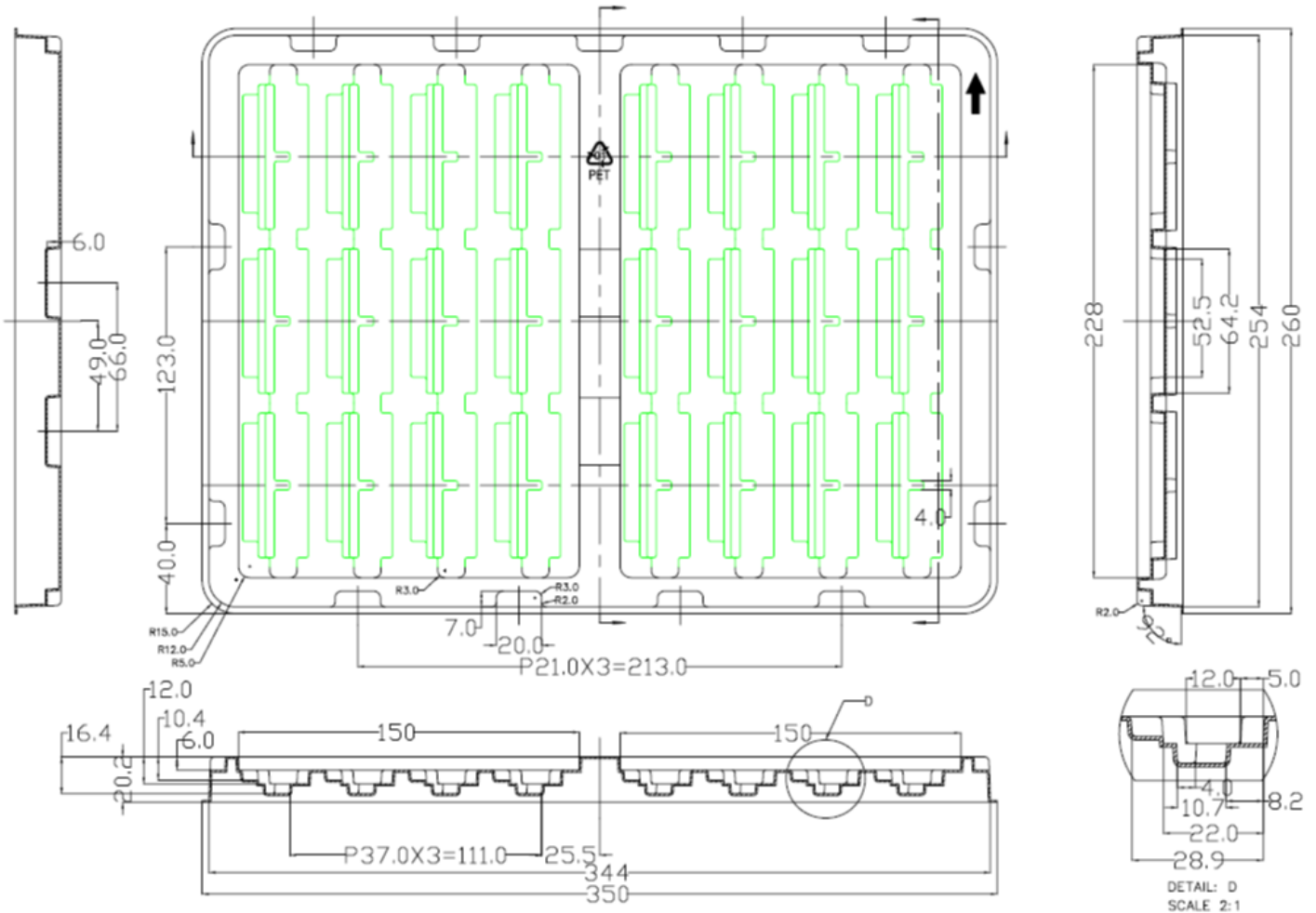
# MAFL-011027



**CATV Diplex Filter**  
**5 - 85/ 102 - 1002MHz**

Rev. V2

## Packaging Tray Information



## Ordering Information

Part number	Description
MAFL-011027	960 Pieces/Box