

Features

- ◆ No Wire Bonds Required
- ◆ Rugged Silicon-Glass Construction
- ◆ Silicon Nitride Passivation
- ◆ Polymer Scratch Protection
- ◆ Ultra-Low Parasitic Capacitance and Inductance
- ◆ Higher RF C.W. Power Handling
- ◆ Better Performance than Packaged Devices

Description and Applications

This device is a silicon glass PIN diode chip fabricated with M/A-COM Tech Solutions patented HMIC process. This 80µm I-region length device features six silicon pedestals embedded in a low loss, low dispersion glass. The diodes are formed on the top of a pedestal and connections to the backside of the device are facilitated by making the pedestal sidewalls electrically conductive. Selective backside metallization is applied producing a surface mount device. The topside is fully encapsulated with silicon nitride and has an additional polymer layer for scratch protection. These protective coatings prevent damage to the junction and the anode air-bridge during handling and assembly. The vertical silicon diode topology provides for a highly efficient heat transfer medium. These surface mount devices are suitable for usage in higher (3W avg.) incident power switches. Small parasitic inductance and excellent RC constant make these devices ideal for absorptive SPST, reflective SP2T switches, and attenuator circuits, where higher P1db and power handling values are required.

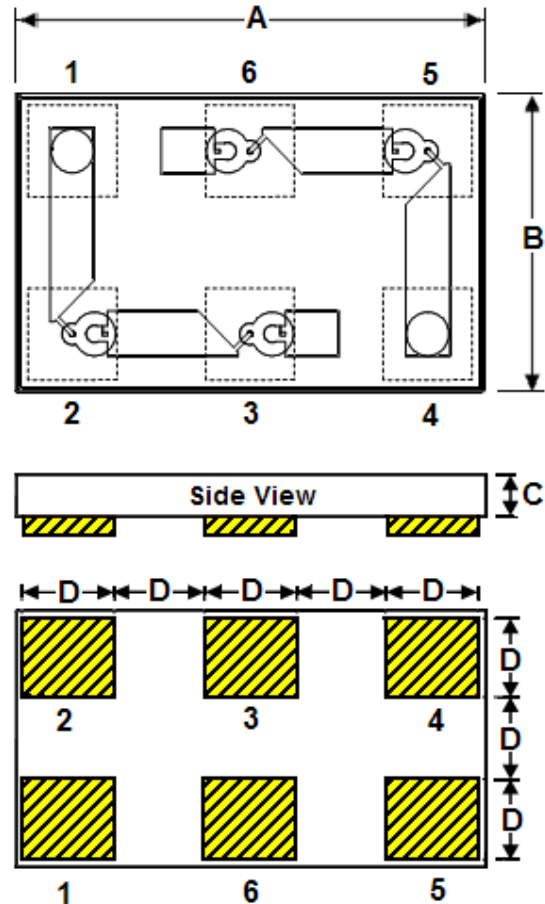
Absolute Maximum Ratings¹

@ T_{AMB} = +25°C (unless otherwise specified)

Parameter	Absolute Maximum
Forward Current	250mA
Reverse Voltage	-100V
Operating Temperature	-55°C to +125°C
Storage Temperature	-55°C to +150°C
Junction Temperature	+175°C
C.W. Incident Power	+35dBm
Mounting Temperature	+300°C for 10 seconds

1. Operation of this device above any one of these parameters

Case Style - ODS-1310



Dim	Inches		Millimeters	
	Min.	Max.	Min.	Max.
A	0.060	0.062	1.524	1.575
B	0.036	0.038	0.914	0.965
C	0.004	0.008	0.102	0.203
D	0.011	0.012	0.279	0.305

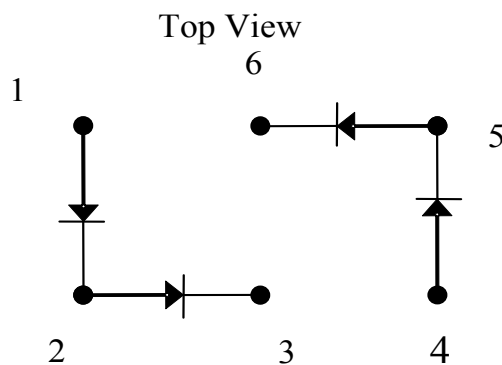
1. Backside Metal: 0.1microns thick.

Electrical Specifications @ +25 °C, per Diode Junction

Symbol	Conditions	Units	Min.	Typ.	Max.
C_T	-40V, 1MHz ¹	pF		0.05	0.07
C_T	-40V, 1GHz ^{1,3}	pF		0.04	0.06
R_S	10mA, 1GHz ^{2,3}	Ω		5.0	
V_F	10mA	V		0.83	1.00
V_R	-10 μ A	V	-70	-100	
I_R	-70V	μ A		-0.1	-10
T_L	+10mA /-6mA	ns		200	
θ_{TH}	1A /10mA	$^{\circ}$ C/W		150	

1. Total capacitance, C_T , is equivalent to the sum of Junction Capacitance, C_j , and Parasitic Capacitance, C_{par} .
2. Series resistance R_S is equivalent to the total diode resistance : $R_s = R_j$ (Junction Resistance) + R_c (Ohmic Resistance)
3. R_s , C_T , T_L , θ_{TH} are measured on an HP4291A Impedance Analyzer with die mounted in a ceramic package with Sn 60/Pb 40

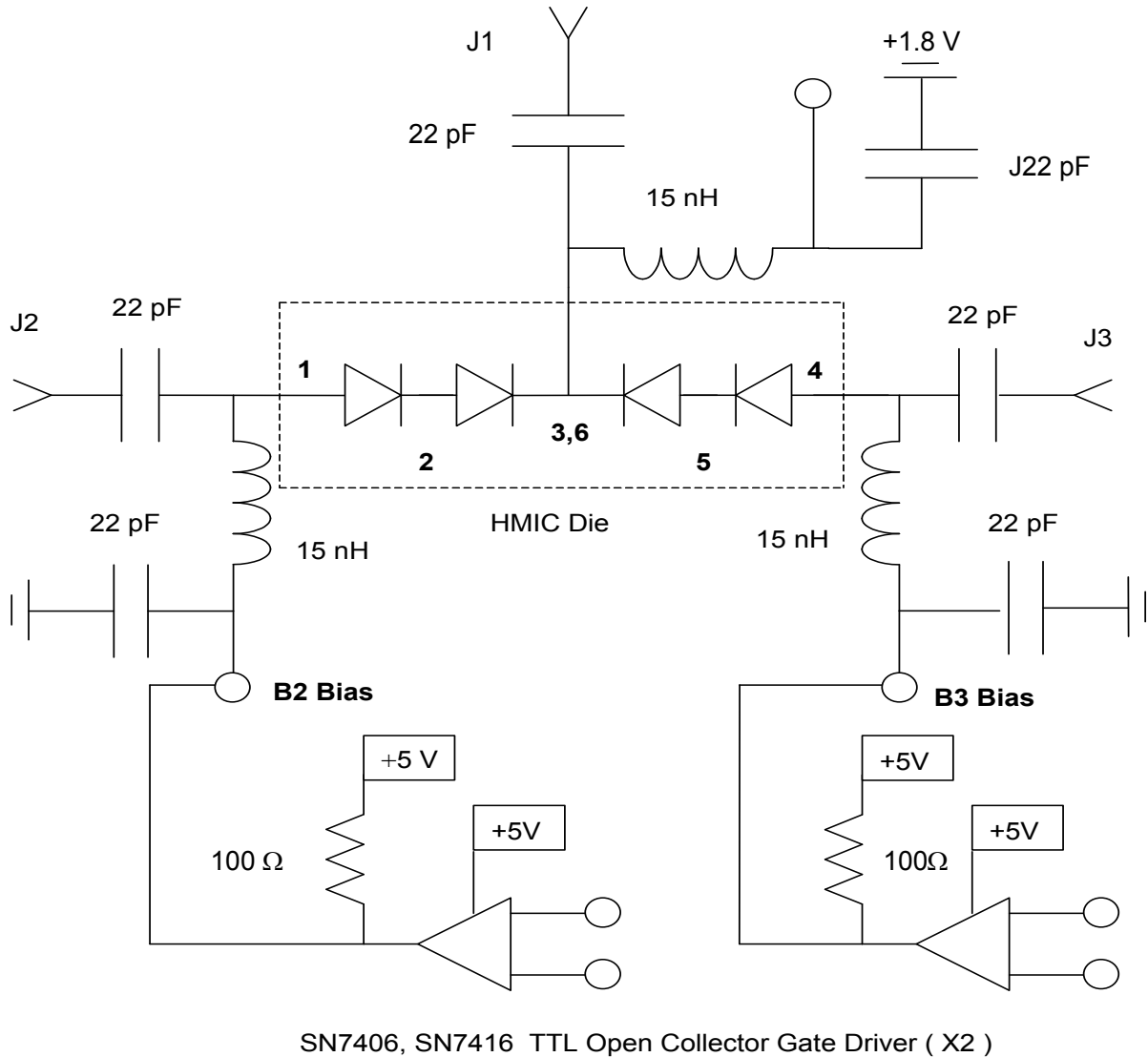
Equivalent Double Tee Equivalent Circuit



Notes:

1. Ports 2 and 5 have a Connected Cathode-Anode Node.
2. Ports 1,3,4, and 6 Have a Singular, Un-Connected Node.

SP2T All Series Reflective Switch with +5V and TTL Logic Control (2-18 GHz)



RF Truth Table for Reflective SP2T using Singular Power Supply: +5V, + I Only

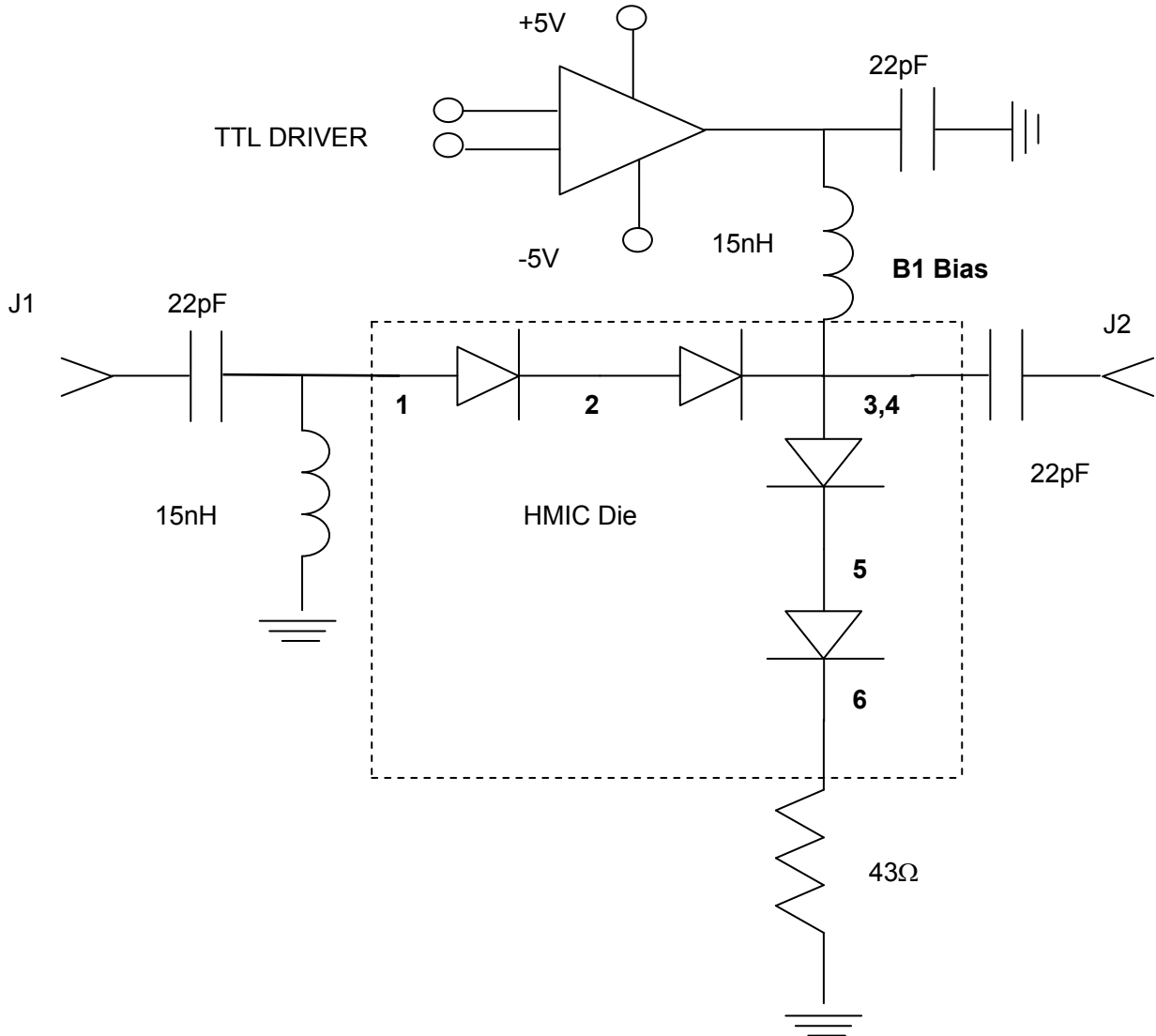
RF State	B2 Diode Bias	B3 Diode Bias
J1 – J2 Low Loss & J1– J3 Isolation	+3.6V @ +14mA	+0.5V @ 0mA
J1 – J3 Low Loss & J1–J2 Isolation	+0.5V @ 0mA	+ 3.6V @ + 14mA

Notes:

1. Diode Forward Voltage Differential (ΔV_f) @ 15mA = 0.9V
2. Insertion Loss Diode Bias = $(+ 5V - (2) * 0.9V - 1.8V) / (100\Omega) = 14mA$
3. Off Isolation Diode Back Bias Voltage = $| - (+1.8V - 0.5V) | = | - 1.3V |$.

3

SPST All Series Absorptive Switch with +5V and TTL Logic Control (2-18 GHz)



RF Truth Table for Absorptive SPST using +5V, -5V Power Supplies

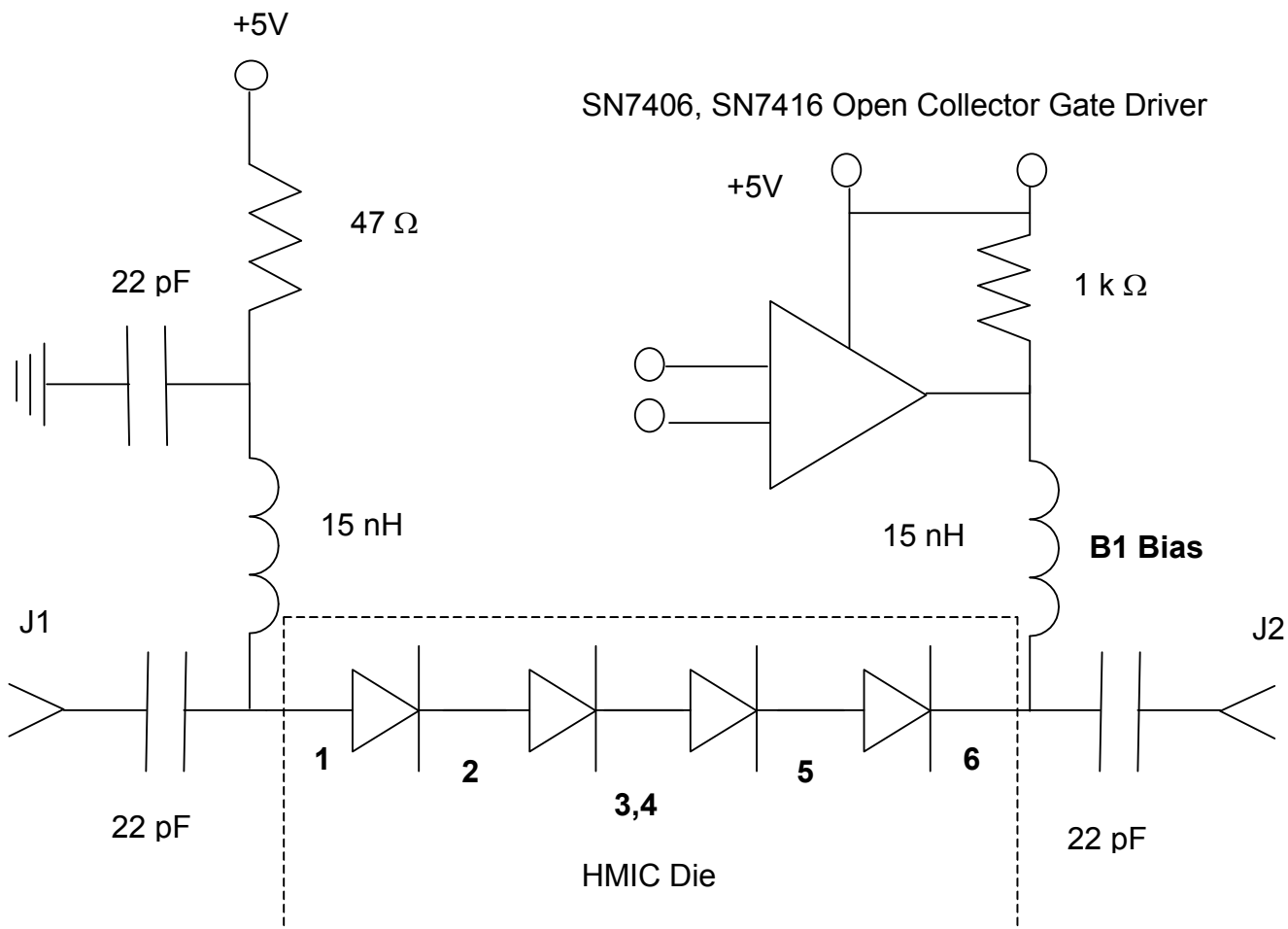
RF State	TTL Value	B1 Diode Bias
J1 – J2 Low Loss	0	- 1.8V @ -20mA
J1 – J2 Isolation	1	+2.7V @ + 20mA

Notes:

1. Diode Forward Voltage Differential (ΔV_f) @ 20mA = 0.9 V
2. Diode R_s @ 20mA = 3.5 Ω
3. Insertion Loss Diode Bias = - 1.8 V @ -20mA from a Constant Current Source
4. Off Isolation Diode Back Bias Voltage through (2) Diodes = $| - (+2.7 \text{ V} - 0 \text{ V}) | = | - 2.7 \text{ V} |$.

M/A-COM Technology Solutions Inc. (MACOM) and its affiliates reserve the right to make changes to the product(s) or information contained herein without notice. Visit www.macom.com for additional data sheets and product information.

SPST All Series Reflective Switch with +5V and TTL Logic Control (2–18 GHz)



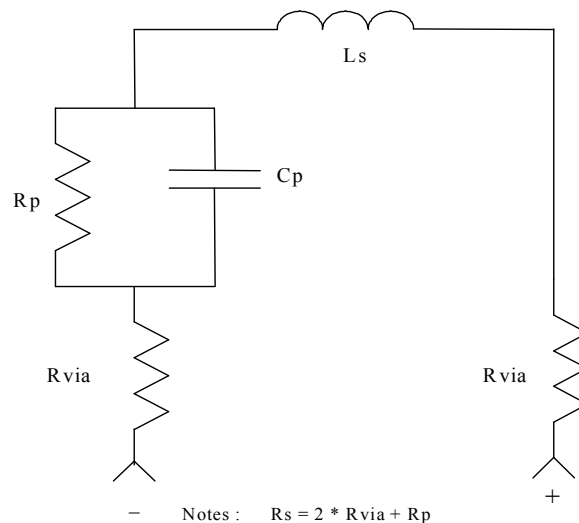
RF Truth Table for Reflective SPST using Singular Power Supply: +5V, + I Only

RF State	TTL Value	B1 Diode Bias
J1 – J2 Low Loss	0	+ 0.5V @ +20mA
J1–J2 Isolation	1	+5.0V @ 0mA

MADP-064908 SPICE Model

PinDiodeModel wBv=80 V
NLPINM1 wPmax=3.0 W
Is=1.0E-14 A Ffe=1.0
Vi=0.0 V
Un=900 cm²/V-sec
Wi=7.5 um
Rr=20 K Ohm
Cmin=0.05 pF
Tau=0.20 usec
Rs=0.1 Ohm
Cj0=0.06 pF
Vj=0.7 V
M=0.5
Fc=0.5
Imax=1.0E+6 A/m²
Kf=0.0
Af=1.0

Equivalent per Diode Schematic



Assembly Guidelines

Handling

All semiconductor chips should be handled with care to avoid damage or contamination from perspiration and skin oils. The use of plastic tipped tweezers or vacuum pickups is strongly recommended for individual components. Bulk handling should insure that abrasion and mechanical shock are minimized.

Bonding

Attachment to a circuit board is made simple through the use of surface mount technology. Mounting pads are conveniently located on the bottom surface of these devices and are removed from the active junction locations. These devices are well suited for solder attachment onto hard and soft substrates. Conductive silver epoxy may also be used for lower Incident power applications (<1W Average Power). The epoxy should be approximately 1-2mils thick and cured at approximately 90°C to 150°C per the manufacturer's schedule.

When soldering these devices on to a hard substrate, hot gas die bonding is preferred. We recommend utilizing a vacuum tip and force of 60 to 100 grams be applied to the top surface of the device. Position the die so that its mounting pads are aligned with the circuit board mounting pads and reflow the solder by heating the circuit trace near the mounting pad while applying 60 to 100 grams of force perpendicular to the top surface of the die. The solder connections to the pads must **not** be made one at a time. Doing so would create un-equal heat flow and thermal stress to the chip. Solder reflow should not be performed by causing heat to flow through the top surface of the die. Since the HMIC glass is transparent, the edges of the mounting pads can be visually inspected through the die to ensure proper solder flow after attachment is complete.

Typical solder re-flow profiles are provided in [Application Note 538](#) "Surface Mounting Instructions" located on the MA-COM website at www.macomtech.com

Ordering Information

Part Number	Packaging
MADP-064908-131000	Die in Gel Pack

M/A-COM Technology Solutions Inc. All rights reserved.

Information in this document is provided in connection with M/A-COM Technology Solutions Inc ("MACOM") products. These materials are provided by MACOM as a service to its customers and may be used for informational purposes only. Except as provided in MACOM's Terms and Conditions of Sale for such products or in any separate agreement related to this document, MACOM assumes no liability whatsoever. MACOM assumes no responsibility for errors or omissions in these materials. MACOM may make changes to specifications and product descriptions at any time, without notice. MACOM makes no commitment to update the information and shall have no responsibility whatsoever for conflicts or incompatibilities arising from future changes to its specifications and product descriptions. No license, express or implied, by estoppel or otherwise, to any intellectual property rights is granted by this document.

THESE MATERIALS ARE PROVIDED "AS IS" WITHOUT WARRANTY OF ANY KIND, EITHER EXPRESS OR IMPLIED, RELATING TO SALE AND/OR USE OF MACOM PRODUCTS INCLUDING LIABILITY OR WARRANTIES RELATING TO FITNESS FOR A PARTICULAR PURPOSE, CONSEQUENTIAL OR INCIDENTAL DAMAGES, MERCHANTABILITY, OR INFRINGEMENT OF ANY PATENT, COPYRIGHT OR OTHER INTELLECTUAL PROPERTY RIGHT. MACOM FURTHER DOES NOT WARRANT THE ACCURACY OR COMPLETENESS OF THE INFORMATION, TEXT, GRAPHICS OR OTHER ITEMS CONTAINED WITHIN THESE MATERIALS. MACOM SHALL NOT BE LIABLE FOR ANY SPECIAL, INDIRECT, INCIDENTAL, OR CONSEQUENTIAL DAMAGES, INCLUDING WITHOUT LIMITATION, LOST REVENUES OR LOST PROFITS, WHICH MAY RESULT FROM THE USE OF THESE MATERIALS.

MACOM products are not intended for use in medical, lifesaving or life sustaining applications. MACOM customers using or selling MACOM products for use in such applications do so at their own risk and agree to fully indemnify MACOM for any damages resulting from such improper use or sale.