

Power Amplifier, 2 W 27.5 - 30.0 GHz



MAAP-011362

Rev. V1

Features

- High Gain: 27.5 dB
- P1dB: 33 dBm
- P3dB: 34 dBm
- IM3 Level: -40 dBc @ P_{OUT} = +20 dBm/tone
- Power Added Efficiency: 28% @ P3dB
- Temperature Compensated Output Power Detector
- Lead-Free 5 mm AQFN 32-lead Package
- RoHS* Compliant

Applications

- Point-to-Point
- VSAT

Description

The MAAP-011362 is a 2 W, 4-stage power amplifier assembled in a lead-free 5 mm 32-lead air cavity QFN plastic package. This power amplifier operates from 27.5 to 30 GHz and provides 27.5 dB of linear gain, 2 W saturated output power and 28% efficiency while biased at 5.5 V.

The MAAP-011362 can be used as a power amplifier stage or as a driver stage in higher power applications. This device is ideally suited for VSAT and 28 GHz PTP applications.

For enhanced linearity at higher output power, the drain current can be increased

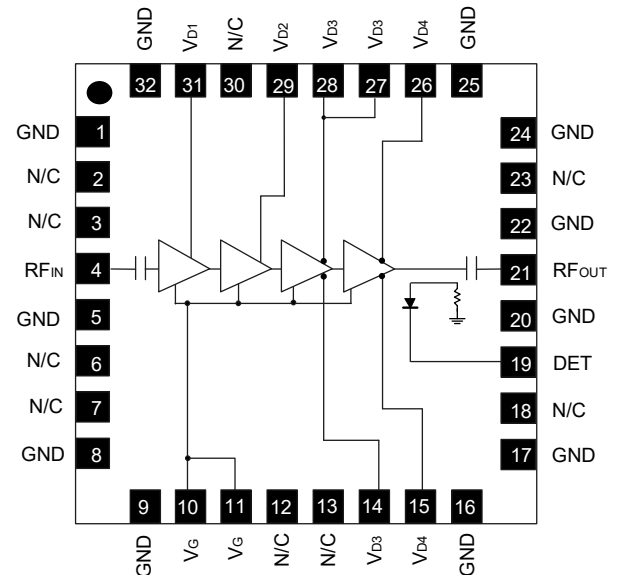
This product is fabricated using a GaAs pHEMT process which features full passivation for enhanced reliability.

Ordering Information^{1,2}

Part Number	Package
MAAP-011362-TR0500	500 Part Reel
MAAP-011362-001SMB	Sample Board

1. Reference Application Note M513 for reel size information.
2. All sample boards include 3 loose parts.

Functional Schematic



Pin Configuration^{3,4}

Pin #	Pin Name	Description
1, 5, 8, 9, 16, 17, 20, 22, 24, 25, 32	GND	Ground
2, 3, 6, 7, 12, 13, 18, 23, 30	N/C	No Connection
4	RF _{IN}	RF Input
10, 11	V _G	Gate Voltage
14, 27, 28	V _{D3}	Drain Voltage 3
15, 26	V _{D4}	Drain Voltage 4
19	DET	Power Detector
21	RF _{OUT}	RF Output
29	V _{D2}	Drain Voltage 2
31	V _{D1}	Drain Voltage 1

3. MACOM recommends connecting all No Connection (N/C) pins to ground.
4. The exposed pad centered on the package bottom must be connected to RF, DC and thermal ground.

* Restrictions on Hazardous Substances, compliant to current RoHS EU directive.

Electrical Specifications: $T_A = +25^\circ\text{C}$, $V_D = 5.5\text{ V}$, $Z_0 = 50\ \Omega$

Parameter	Test Conditions	Units	Min.	Typ.	Max.
Gain	27.5 GHz 30.0 GHz	dB	24.2 21.3	27.5 27.5	—
Output Power @ 3dB	27.5 GHz 30.0 GHz	dBm	31.5 31	34.0 34.5	—
IM3 Level	$P_{OUT} = 20\text{ dBm / tone}$	dBc	—	-40	—
Power Added Efficiency @ 3dB	—	%	—	28	—
Input Return Loss	—	dB	—	15	—
Output Return Loss	—	dB	—	15	—
Quiescent Current ⁵	I_{DSQ} (see bias conditions, page 4)	mA	—	1200	—
Drain Current ($V_{D1} + V_{D2} + V_{D3} + V_{D4}$)	$P_{IN} = 12\text{ dBm}$	mA	—	1700	—

5. Quiescent current can be increased to optimize the IM3 performance at output power close to saturation. Please see the application information section of this datasheet

Maximum Operating Conditions

Parameter	Rating
Input Power	$P_{IN} \leq 3\text{ dB Compression}$
Junction Temperature ^{6,7}	+160°C
Operating Temperature	-40°C to +85°C

6. Operating at nominal conditions with junction temperature $\leq +160^\circ\text{C}$ will ensure $MTTF > 1 \times 10^6$ hours.
 7. Junction Temperature (T_J) = $T_C + \Theta_{JC} * ((V * I) - (P_{OUT} - P_{IN}))$
 Typical thermal resistance (Θ_{JC}) = 7 °C/W.
 a) For $T_C = +25^\circ\text{C}$
 $T_J = 78.9^\circ\text{C @ } 6\text{ V, } 1.7\text{ A, } P_{OUT} = 34.0\text{ dBm, } P_{IN} = 12\text{ dBm}$
 b) For $T_C = +85^\circ\text{C}$
 $T_J = 138.9^\circ\text{C @ } 6\text{ V, } 1.7\text{ A, } P_{OUT} = 34.0\text{ dBm, } P_{IN} = 12\text{ dBm}$

Absolute Maximum Ratings^{8,9,10}

Parameter	Absolute Maximum
Input Power	15 dBm
Drain Voltage	+6 V
Gate Voltage	-3 to 0 V
Junction Temperature ⁹	+175°C
Storage Temperature	-65°C to +125°C

8. Exceeding any one or combination of these limits may cause permanent damage to this device.
 9. MACOM does not recommend sustained operation near these survivability limits.
 10. Junction temperature directly affects device MTTF. Junction temperature should be kept as low as possible to maximize lifetime.

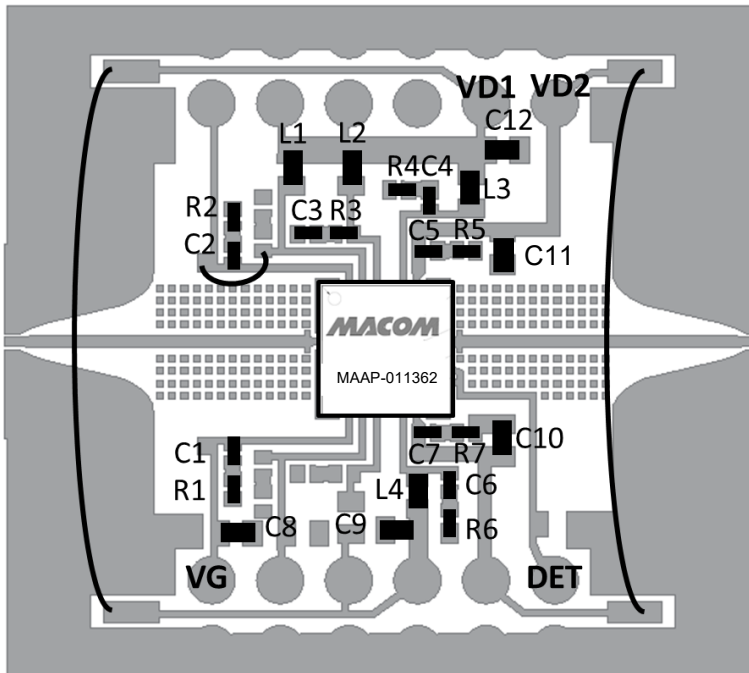
Handling Procedures

Please observe the following precautions to avoid damage:

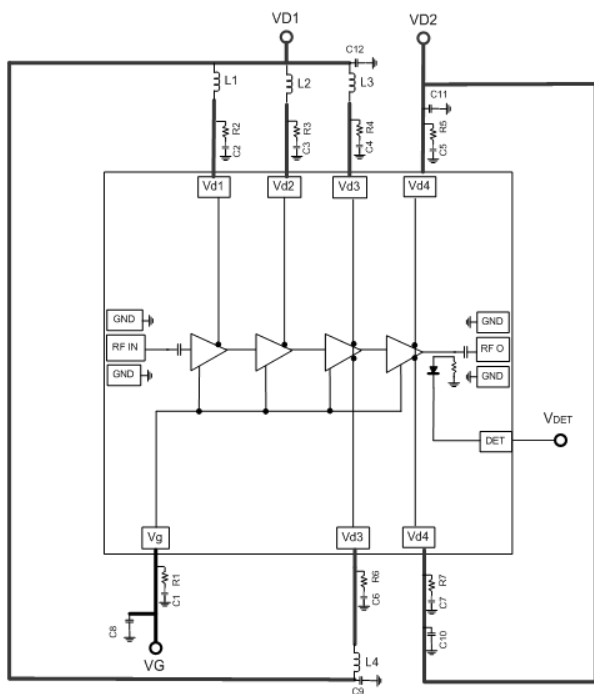
Static Sensitivity

These electronic devices are sensitive to electrostatic discharge (ESD) and can be damaged by static electricity. Proper ESD control techniques should be used when handling these HBM Class 1A devices.

Sample Board Layout



Application Schematic



Parts List

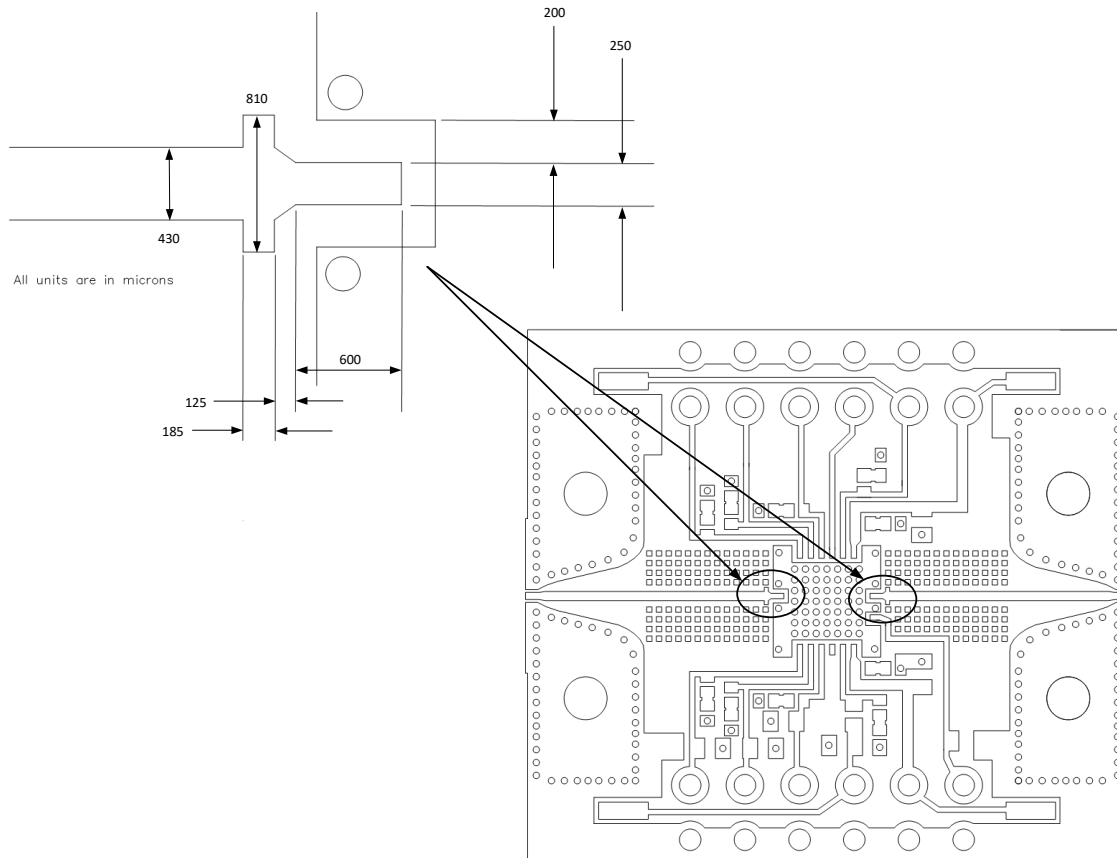
Part	Value	Case Style
C1 - C7	0.01 μ F	0402
C8 - C12	22 μ F	0603
R1 - R7	10 Ω	0402
L1 - L4	Ferrite bead Murata BLM18HE601SN1D	0603

Sample Board Material Specifications

Top Layer: 1/2 oz Copper Cladding, 0.017 mm thickness
Dielectric Layer: Rogers RO4003C 0.203 mm thickness
Bottom Layer: 1/2 oz Copper Cladding, 0.017 mm thickness
Finished overall thickness: 0.238 mm

Recommended PCB Layout Detail:

RF input and output pre-matching circuit patterns are identical and are designed to compensate packaging effects. Transmission line dimensions apply to a PCB with 0.203 mm thick Rogers RO4003C laminate dielectric. Performance curves shown in this data sheet were measured with these circuit patterns.



Biasing Conditions

Recommended biasing conditions are $V_D = 5.5\text{ V}$, $I_{DSQ} = 1.2\text{ to }1.8\text{ A}$ (controlled with V_G). The drain bias voltage range is 5.0 to 5.5 V. Higher I_{DSQ} leads to improved IM3 performance close to P_{SAT} .

V_G pins 10 and 11 are connected internally; choose either pin for layout convenience. Muting can be accomplished by setting the V_G to the pinched off voltage ($V_G = -2\text{ V}$).

V_D bias must be applied to V_{D1} , V_{D2} , V_{D3} , and V_{D4} pins. V_{D3} pins 27 and 28 are connected internally; choose pin 14, 27 or 28 for layout convenience. Two V_{D4} pins 15 and 26 (not connected internally) are required for current symmetry.

Operating the MAAP-011362

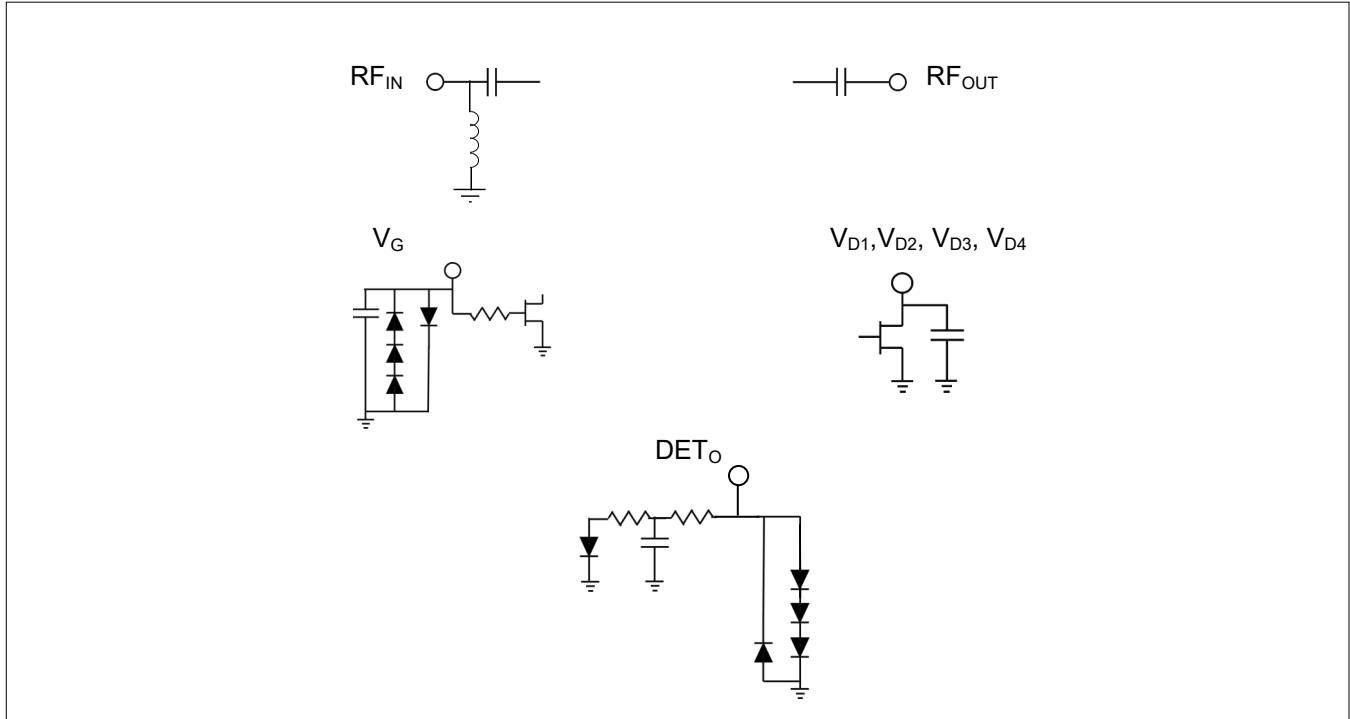
Turn-on

1. Apply V_G (-1.5 V).
2. Apply V_D (5.5 V typical).
3. Set I_{DQ} by adjusting V_G more positive (typically -0.9 to -1.0 V for $I_{DSQ} = 1.2\text{ A}$).
4. Apply RF_{IN} signal.

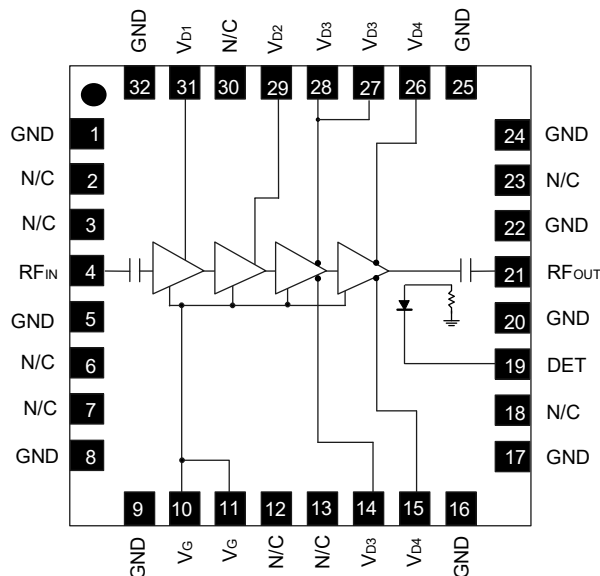
Turn-off

1. Remove RF_{IN} signal.
2. Decrease V_G to -1.5 V.
3. Decrease V_D to 0 V.

Interface Schematics



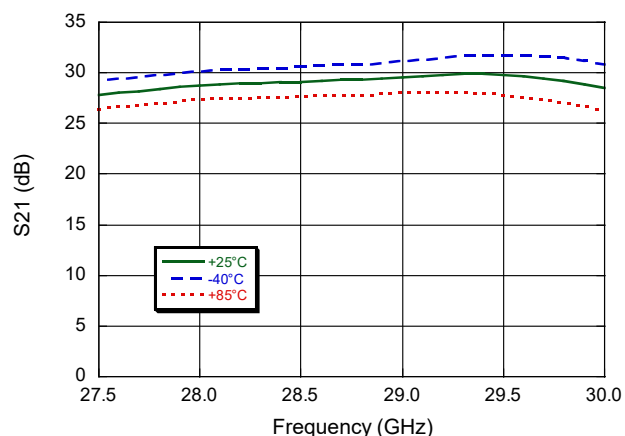
Pin Configuration and Functional Descriptions



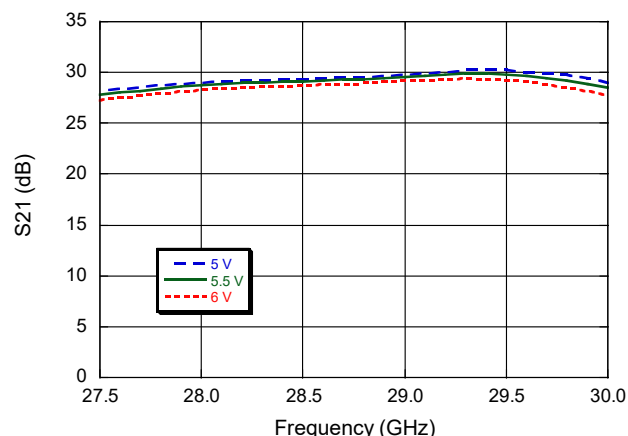
Pin #	Pin Name	Description
1,5,8,9,16,17,20,22,24,25,32	GND	These pins are grounded on the package and MMIC.
2,3,6,7,12,13,18,23,30	N/C	These pins are not connected to anything and are recommended to be grounded in the application.
4	RF _{IN}	RF Signal Input. This pin is matched to 50 Ω and is AC coupled.
10,11	V _G	Power amplifier gate controls. Adjust V _G from -1.5 V to 0 V to achieve the desired quiescent current. External bypass capacitors and de-Q resistor are required as described in the applications schematic.
14,27,28	V _{D3}	Drain biases for stage 3 of the amplifier. External bypass capacitors, de-Q resistors and bead inductors are required as described in the applications schematic. There is no internal connection between pins 14 and 23 and 28 so all pins need to be externally connected to the same voltage.
15,26	V _{D4}	Drain biases for stage 4 of the amplifier. External bypass capacitors, de-Q resistors and bead inductors are required as described in the applications schematic. There is no internal connection between pins 15 and 26 so both pins need to be externally connected to the same voltage.
19	V _{DET}	Detector Diode Output voltage. This provides an output voltage proportional to the RF output power.
21	RF _{OUT}	RF Signal Output. This pad is matched to 50 Ω and is AC coupled
29	V _{D2}	Drain bias for stage 2 of the amplifier. External bypass capacitors, de-Q resistor and bead inductor are required as described in the applications schematic.
31	V _{D1}	Drain bias for stage 1 of the amplifier. External bypass capacitors, de-Q resistor and bead inductor are required as described in the applications schematic.

Typical Performance Curves: $V_D = 5.5 \text{ V}$, $I_{DSQ} = 1200 \text{ mA}$

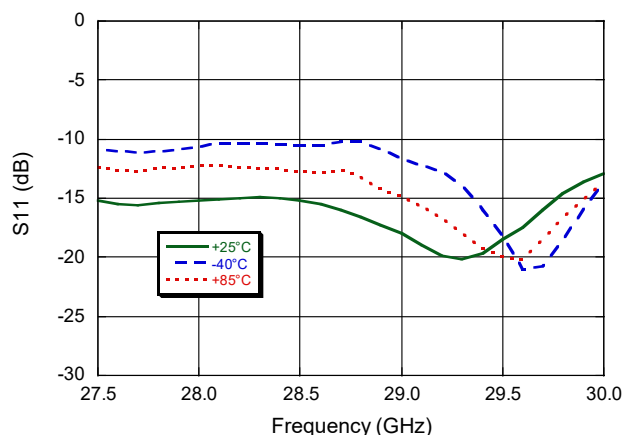
Small Signal Gain vs. Frequency over Temperature



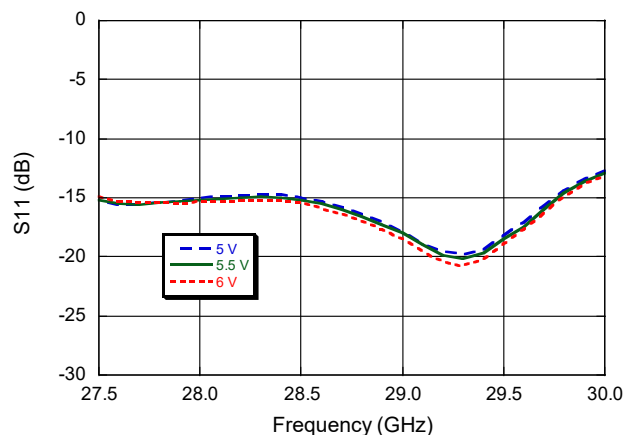
Small Signal Gain vs. Frequency over Bias Voltage



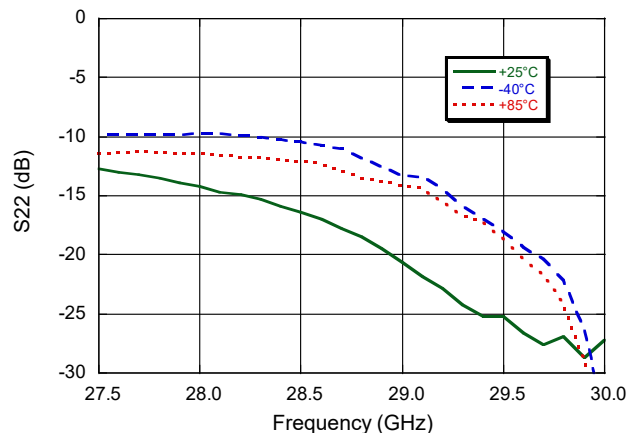
Input Return Loss vs. Frequency over Temperature



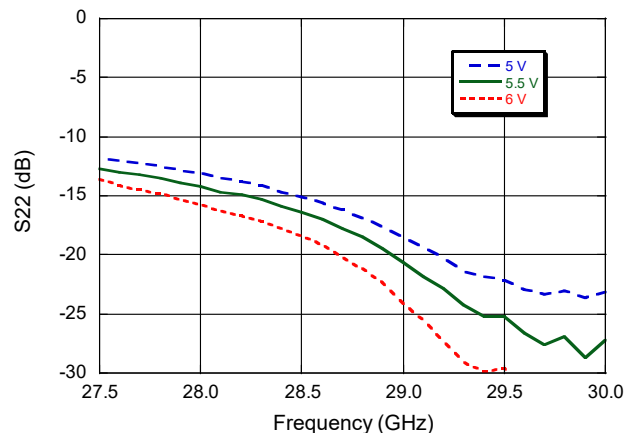
Input Return Loss vs. Frequency over Bias Voltage



Output Return Loss vs. Frequency over Temperature

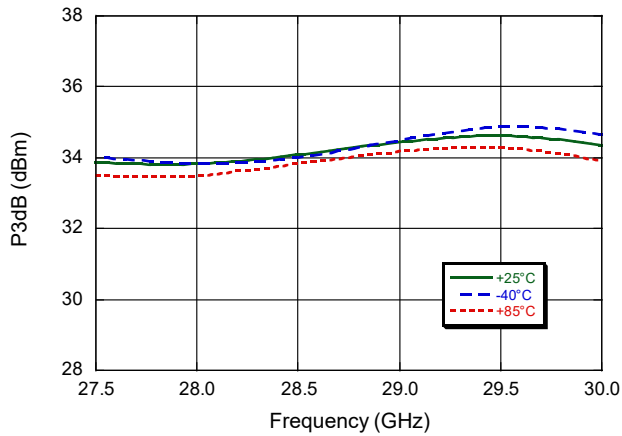


Output Return Loss vs. Frequency over Bias Voltage

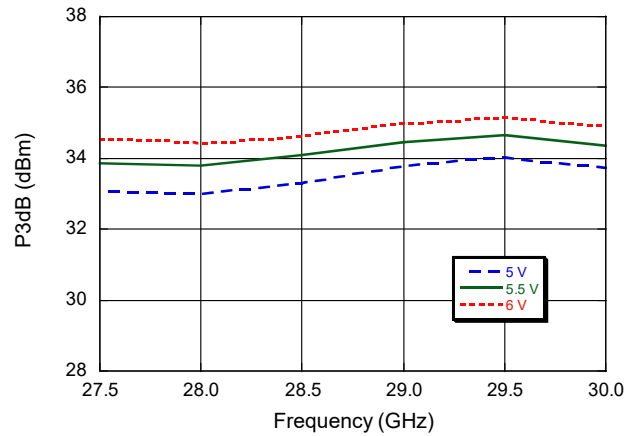


Typical Performance Curves: $V_D = 5.5 \text{ V}$, $I_{DSQ} = 1200 \text{ mA}$

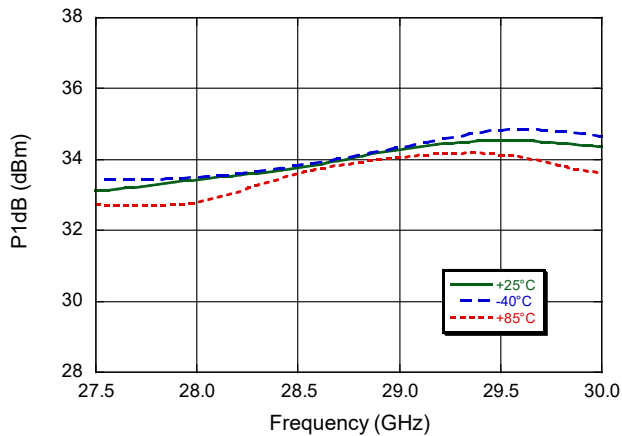
P3dB vs. Frequency over Temperature



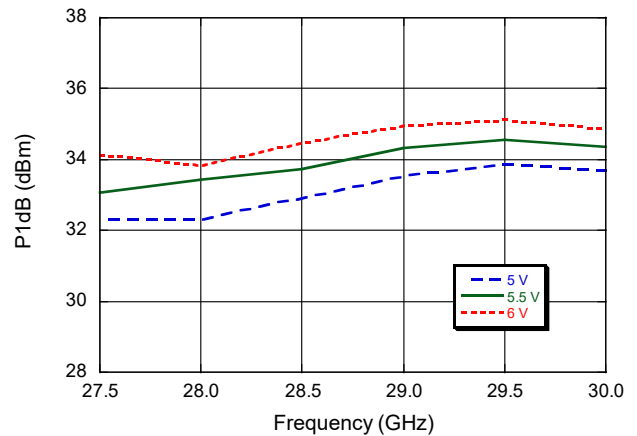
P3dB vs. Frequency over Bias Voltage



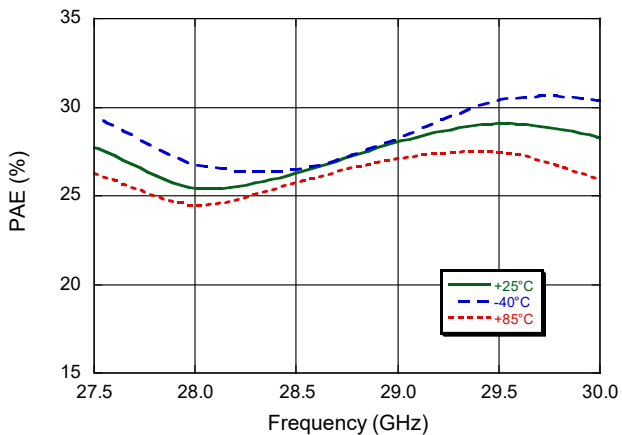
P1dB vs. Frequency over Temperature



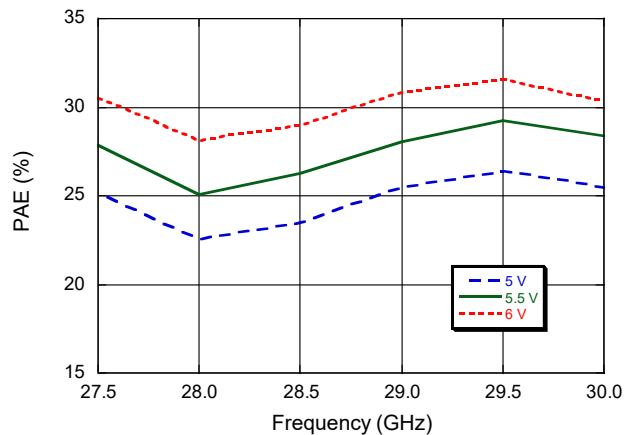
P1dB vs. Frequency over Bias Voltage



PAE@3dB vs. Frequency over Temperature

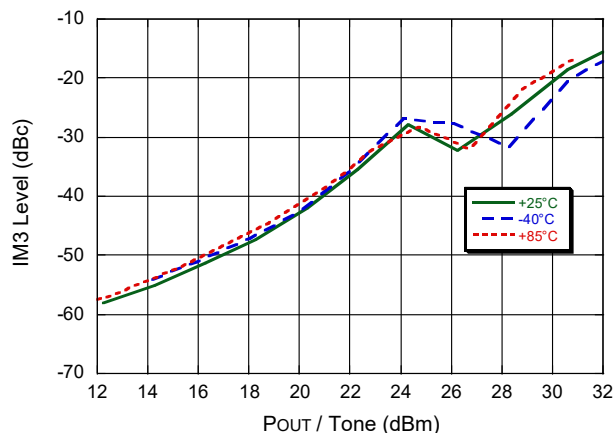


PAE@3dB vs. Frequency over Bias Voltage

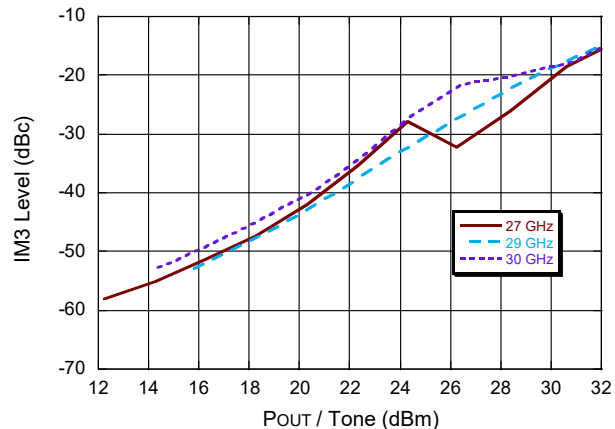


Typical Performance Curves: $V_D = 5.5\text{ V}$, $I_{DSQ} = 1200\text{ mA}$

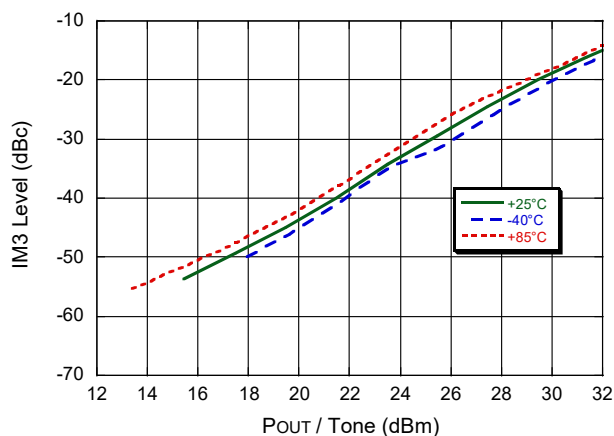
IM3 vs. Output Power (27 GHz)



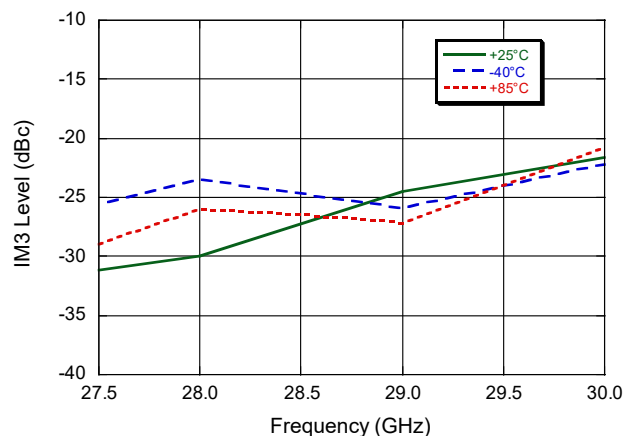
IM3 vs. Output Power



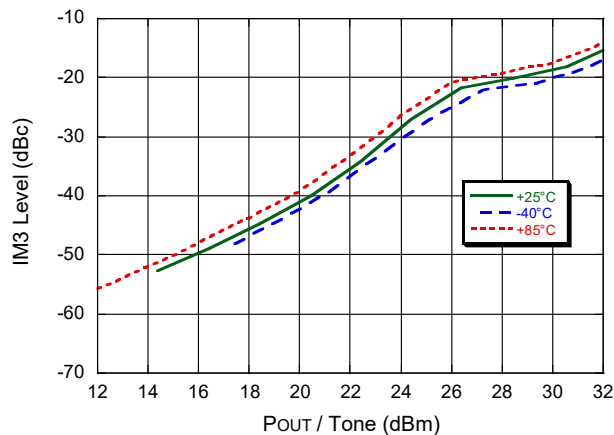
IM3 vs. Output Power (29 GHz)



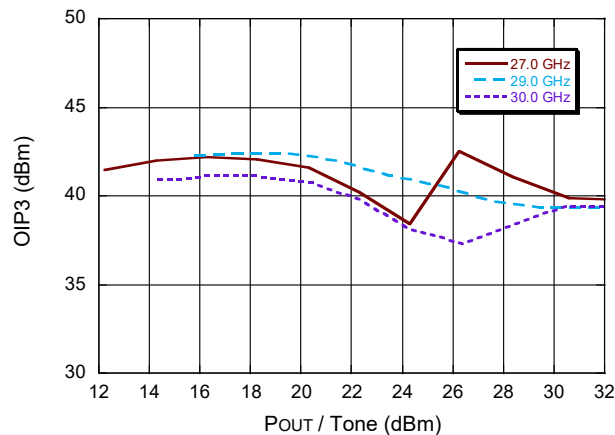
IM3 vs. Frequency @ Output Power = 27 dBm/tone



IM3 vs. Output Power (30 GHz)

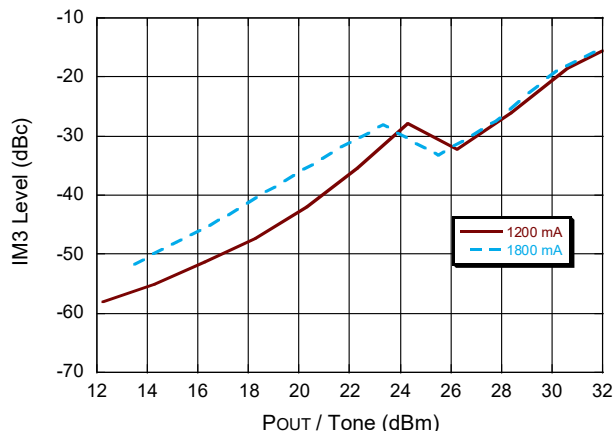


Output IP3 vs. Output Power

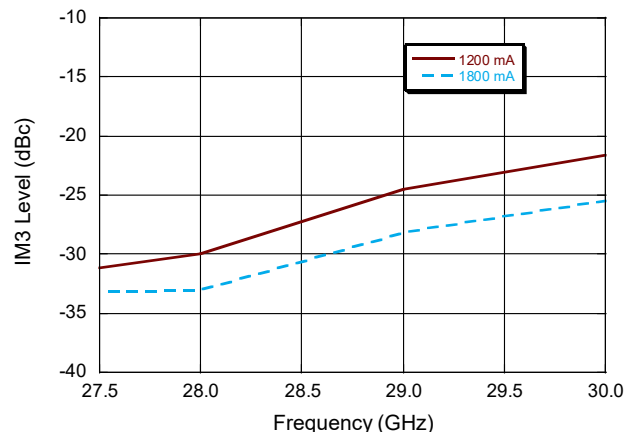


Typical Performance Curves: $V_D = 5.5\text{ V}$, 25°C

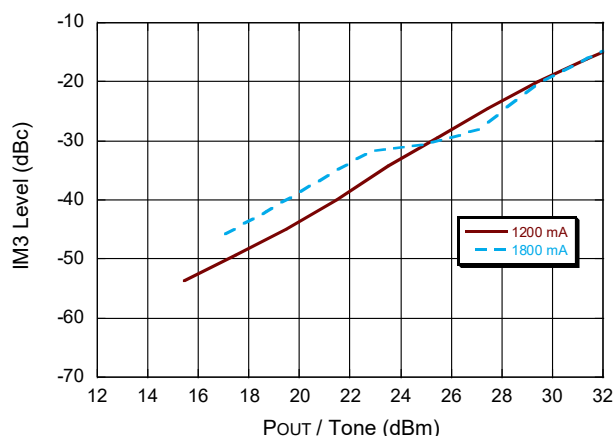
IM3 vs. Output Power by Drain Current @ 27 GHz



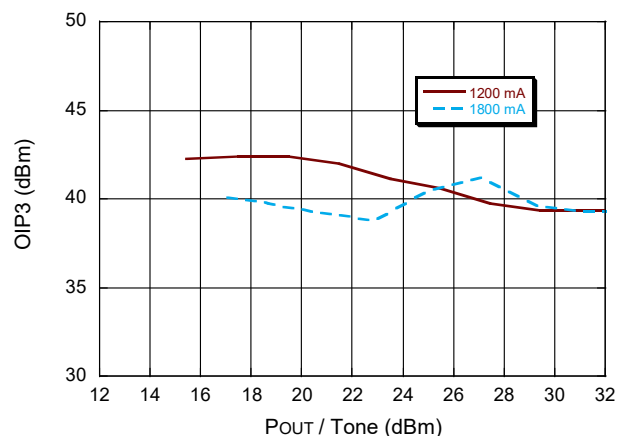
IM3 vs. Frequency by Drain Current @ $P_{out} = 27\text{ dBm/ tone}$



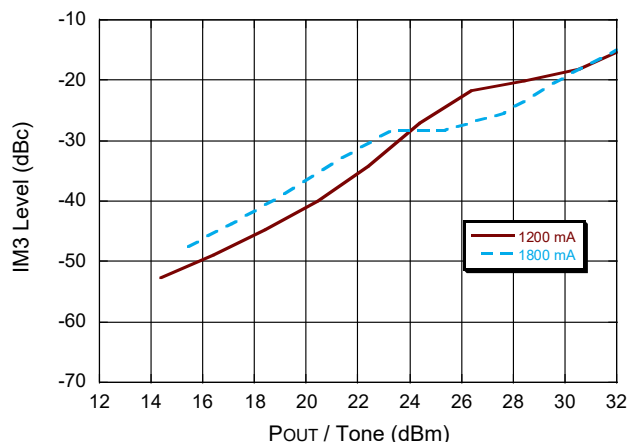
IM3 vs. Output Power by Drain Current @ 29 GHz



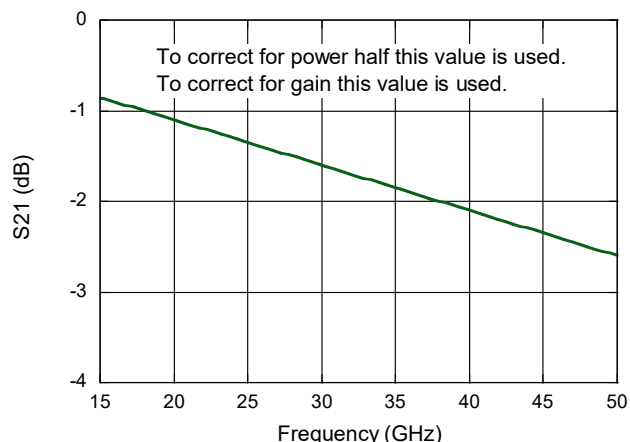
Output IP3 vs. Output Power @ 29 GHz



IM3 vs. Output Power by Drain Current @ 30 GHz

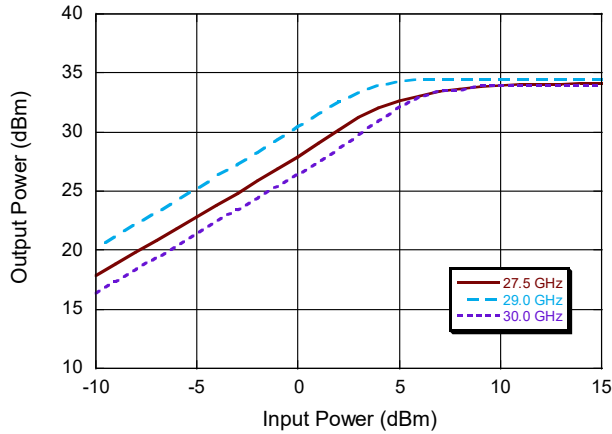


Combined Input and Output Sample Board Thru Loss

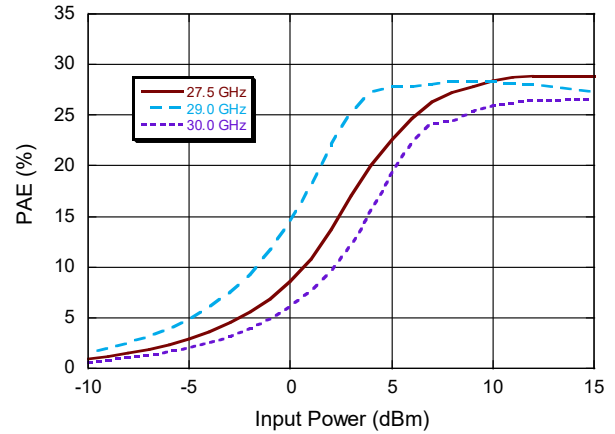


Typical Performance Curves: $V_D = 5.5\text{ V}$, $I_{DSQ} = 1200\text{ mA}$, $+25^\circ\text{C}$

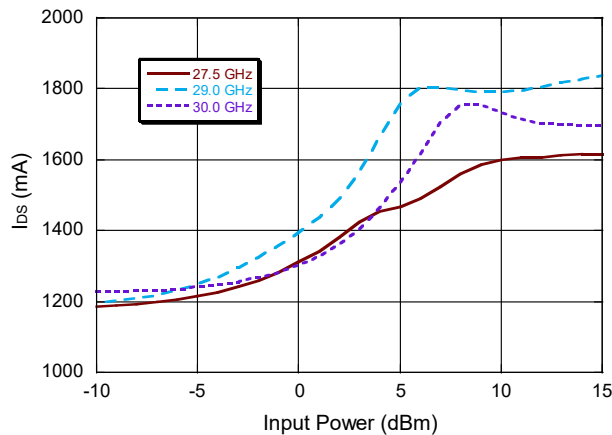
Output Power vs. Input Power



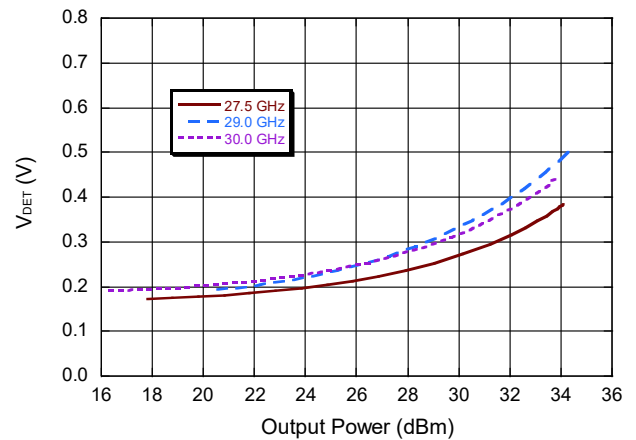
PAE vs. Input Power



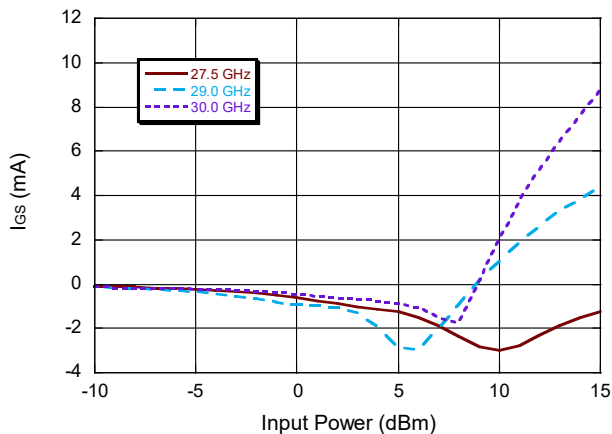
Bias Current vs. Input Power



Detector Voltage vs. Output Power



Gate Current vs. Input Power



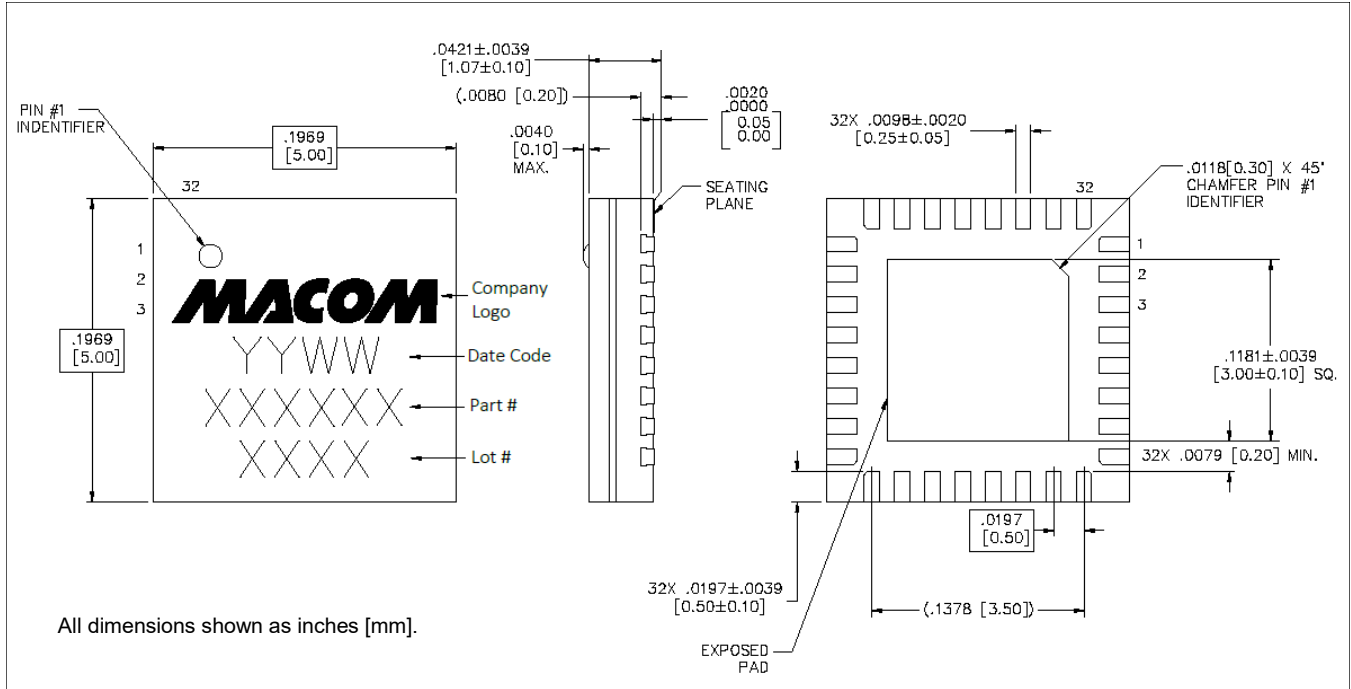
Power Amplifier, 2 W
27.5 - 30.0 GHz



MAAP-011362

Rev. V1

Lead-Free 5 mm 32-Lead AQFN Package[†]



[†] Reference Application Note S2083 for lead-free solder reflow recommendations.
 Meets JEDEC moisture sensitivity level 3 requirements.
 Plating is NiPdAu.

MACOM Technology Solutions Inc. ("MACOM"). All rights reserved.

These materials are provided in connection with MACOM's products as a service to its customers and may be used for informational purposes only. Except as provided in its Terms and Conditions of Sale or any separate agreement, MACOM assumes no liability or responsibility whatsoever, including for (i) errors or omissions in these materials; (ii) failure to update these materials; or (iii) conflicts or incompatibilities arising from future changes to specifications and product descriptions, which MACOM may make at any time, without notice. These materials grant no license, express or implied, to any intellectual property rights.

THESE MATERIALS ARE PROVIDED "AS IS" WITH NO WARRANTY OR LIABILITY, EXPRESS OR IMPLIED, RELATING TO SALE AND/OR USE OF MACOM PRODUCTS INCLUDING FITNESS FOR A PARTICULAR PURPOSE, MERCHANTABILITY, INFRINGEMENT OF INTELLECTUAL PROPERTY RIGHT, ACCURACY OR COMPLETENESS, OR SPECIAL, INDIRECT, INCIDENTAL, OR CONSEQUENTIAL DAMAGES WHICH MAY RESULT FROM USE OF THESE MATERIALS.

MACOM products are not intended for use in medical, lifesaving or life sustaining applications. MACOM customers using or selling MACOM products for use in such applications do so at their own risk and agree to fully indemnify MACOM for any damages resulting from such improper use or sale.