

# CGHV40180P

180 W, DC - 2.0 GHz, 50 V, GaN HEMT

## Description

The CGHV40180P is an unmatched, gallium nitride (GaN) high electron mobility transistor (HEMT). The CGHV40180P, operating from a 50 volt rail, offers a general purpose, broadband solution to a variety of RF and microwave applications. GaN HEMTs offer high efficiency, high gain, and wide bandwidth capabilities making the CGHV40180P ideal for linear and compressed amplifier circuits. The transistor is available in a 2-lead pill package.



Package Types: 440206  
PN's: CGHV40180P

## Features

- Up to 2.0 GHz operation
- 24 dB small signal gain at 900 MHz
- 20 dB power gain at 900 MHz
- 250 W typical output power at 900 MHz
- 75% efficiency at  $P_{SAT}$

## Applications

- Military communications
- Public safety VHF-UHF applications
- Radar
- Medical
- Broadband amplifiers

## Typical Performance Over 800 MHz - 1000 MHz ( $T_c = 25^\circ\text{C}$ ), 50 V

| Parameter                      | 800 MHz | 850 MHz | 900 MHz | 950 MHz | 1000 MHz | Units |
|--------------------------------|---------|---------|---------|---------|----------|-------|
| Small Signal Gain              | 25.6    | 25.2    | 24.6    | 24.4    | 24.3     | dB    |
| Gain @ $P_{IN}$ 34 dBm         | 20.4    | 20.8    | 20.4    | 20.1    | 20.1     | dB    |
| Output Power @ $P_{IN}$ 34 dBm | 275     | 302     | 275     | 257     | 257      | W     |
| EFF @ $P_{IN}$ 34 dBm          | 67      | 75      | 76      | 73      | 71       | %     |

Note:  
Measured CW in the CGHV40180P-AMP Application circuit.

Large Signal Models Available for ADS and MWO



## Absolute Maximum Ratings (Not Simultaneous) at 25 °C Case Temperature

| Parameter                                       | Symbol          | Rating    | Units | Conditions                     |
|---|-----------------|-----------|-------|--------------------------------|
| Drain-Source Voltage                            | $V_{DSS}$       | 150       | Volts | 25 °C                          |
| Gate-to-Source Voltage                          | $V_{GS}$        | -10, +2   | Volts | 25 °C                          |
| Storage Temperature                             | $T_{STG}$       | -65, +150 | °C    |                                |
| Operating Junction Temperature <sup>1</sup>     | $T_J$           | 225       | °C    |                                |
| Maximum Forward Gate Current                    | $I_{GMAX}$      | 42        | mA    | 25 °C                          |
| Maximum Drain Current <sup>1</sup>              | $I_{DMAX}$      | 12.1      | A     | 25 °C                          |
| Soldering Temperature <sup>2</sup>              | $T_S$           | 245       | °C    |                                |
| CGHV40180P Thermal Resistance, Junction to Case | $R_{\theta JC}$ | 0.87      | °C/W  | $P_{DISS} = 150, 85\text{ °C}$ |
| Maximum Dissipated Power                        |                 | 150       | W     | $P_{DISS} = 150, 85\text{ °C}$ |
| Case Operating Temperature <sup>3</sup>         | $T_C$           | -40, +150 | °C    |                                |

Notes:

<sup>1</sup> Current limit for long term, reliable operation.

<sup>2</sup> Refer to the Application Note on soldering.

<sup>3</sup> See also, power de-rating curve on page 5.

## Electrical Characteristics

| Characteristics  | Symbol       | Min. | Typ. | Max.  | Units    | Conditions   |
|--|--------------|------|------|-------|----------|--|
| DC Characteristics <sup>1</sup> ( $T_C = 25\text{ °C}$ )   |              |      |      |       |          |  |
| Gate Threshold Voltage   | $V_{GS(th)}$ | -3.8 | -3.0 | -2.3  | $V_{DC}$ | $V_{DS} = 10\text{ V}, I_D = 41.8\text{ mA}$   |
| Gate Quiescent Voltage   | $V_{GS(Q)}$  | -    | -2.7 | -     | $V_{DC}$ | $V_{DS} = 50\text{ V}, I_D = 1000\text{ mA}$   |
| Saturated Drain Current <sup>2</sup>   | $I_{DS}$     | 31.4 | 37.6 | -     | A        | $V_{DS} = 6.0\text{ V}, V_{GS} = 2.0\text{ V}$   |
| Drain-Source Breakdown Voltage   | $V_{BR}$     | 125  | -    | -     | $V_{DC}$ | $V_{GS} = -8\text{ V}, I_D = 41.8\text{ mA}$   |
| RF Characteristics <sup>3</sup> ( $T_C = 25\text{ °C}, F_0 = 900\text{ MHz}$ Unless Otherwise Noted) |              |      |      |       |          |  |
| Small Signal Gain  | $G_{SS}$     | 22.8 | 24.0 | -     | dB       | $V_{DD} = 50\text{ V}, I_{DQ} = 1.0\text{ A}, P_{in} = 10\text{ dBm CW}$                                   |
| Power Gain   | $G_P$        | 18.4 | 19.8 | -     | dB       | $V_{DD} = 50\text{ V}, I_{DQ} = 1.0\text{ A}, P_{in} = 34\text{ dBm CW}$                                   |
| Power Output at Saturation   | $P_{OUT}$    | 52.6 | 53.9 | -     | dBm      | $V_{DD} = 50\text{ V}, I_{DQ} = 1.0\text{ A}, P_{in} = 34\text{ dBm CW}$                                   |
| Drain Efficiency <sup>4</sup>  | $\eta$       | 59   | 69   | -     | %        | $V_{DD} = 50\text{ V}, I_{DQ} = 1.0\text{ A}, P_{in} = 34\text{ dBm CW}$                                   |
| Output Mismatch Stress   | VSWR         | -    | -    | 3 : 1 | $\Psi$   | No Damage at All Phase Angles,<br>$V_{DD} = 50\text{ V}, I_{DQ} = 1.0\text{ A}, P_{OUT} = 180\text{ W CW}$ |
| Dynamic Characteristics  |              |      |      |       |          |  |
| Input Capacitance  | $C_{GS}$     | -    | 57.8 | -     | pF       | $V_{DS} = 50\text{ V}, V_{GS} = -8\text{ V}, f = 1\text{ MHz}$   |
| Output Capacitance   | $C_{DS}$     | -    | 13.7 | -     | pF       | $V_{DS} = 50\text{ V}, V_{GS} = -8\text{ V}, f = 1\text{ MHz}$   |
| Feedback Capacitance   | $C_{GD}$     | -    | 1.23 | -     | pF       | $V_{DS} = 50\text{ V}, V_{GS} = -8\text{ V}, f = 1\text{ MHz}$   |

Notes:

<sup>1</sup> Measured on wafer prior to packaging.

<sup>2</sup> Scaled from PCM data.

<sup>3</sup> Measurements are to be performed using the production test fixture AD-838292P-TB.

<sup>4</sup> Drain efficiency =  $P_{OUT}/P_{DC}$ .

2

MACOM Technology Solutions Inc. (MACOM) and its affiliates reserve the right to make changes to the product(s) or information contained herein without notice. Visit [www.macom.com](http://www.macom.com) for additional data sheets and product information.

For further information and support please visit: <https://www.macom.com/support>

Rev. 1.4, SEPTEMBER 2023

**CGHV40180P Typical Performance**

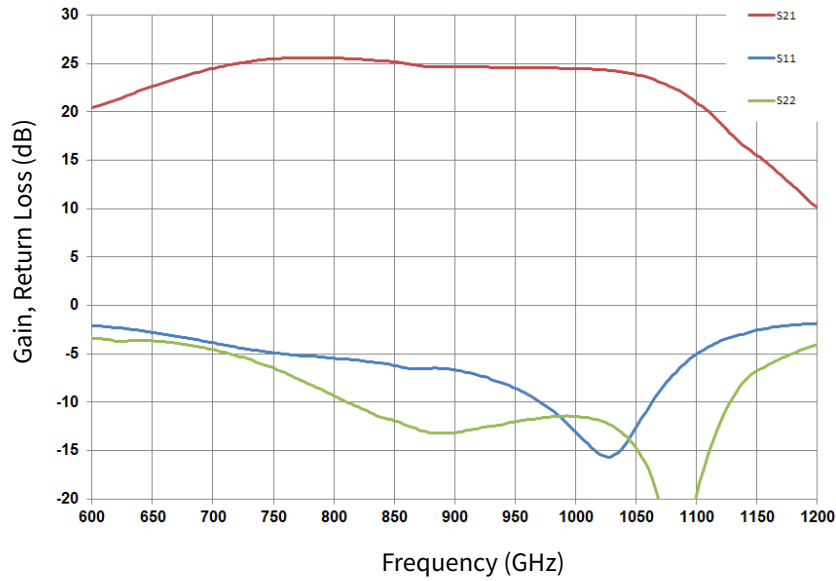


Figure 1. Small Signal Gain and Return Loss vs Frequency  
 Measured in Application Circuit CGHV40180P  $V_{DD} = 50\text{ V}$ ,  $I_{DQ} = 1.0\text{ A}$

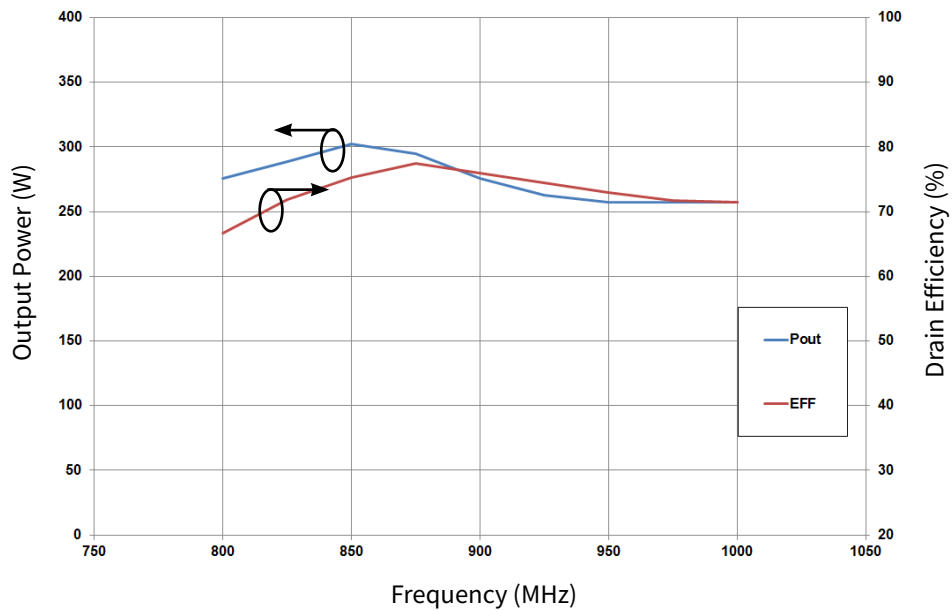


Figure 2. Output Power and Drain Efficiency vs Frequency  
 CGHV40180P-TB, CW Operation,  $V_{DD} = 50\text{ V}$ ,  $I_{DQ} = 1.0\text{ A}$ , @  $P_{IN} 34\text{ dBm}$

**CGHV40180P Typical Performance**

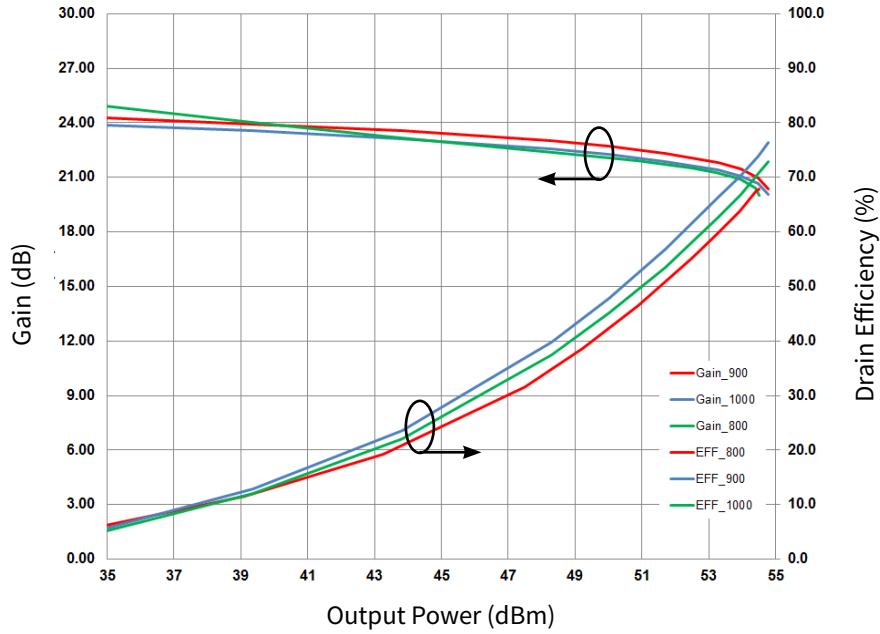


Figure 3. Gain and Drain EFF vs Frequency and Output Power  
CGHV40180P-TB, CW Operation,  $V_{DD} = 50\text{ V}$ ,  $I_{DQ} = 1.0\text{ A}$

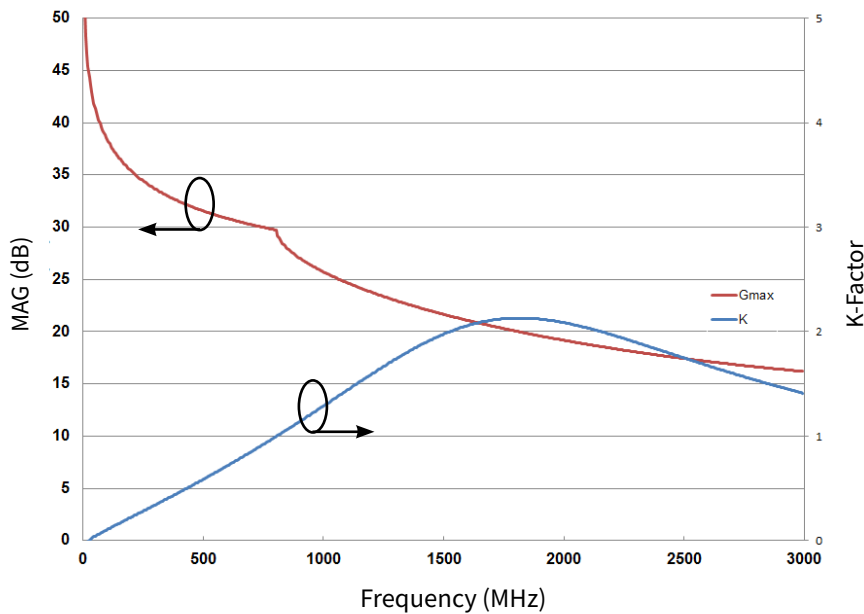


Figure 4. Simulated Maximum Available Gain and  
K-factor of the CGHV40180P  $V_{DD} = 50\text{ V}$ ,  $I_{DQ} = 1.0\text{ A}$

### CGHV40180P Power Dissipation De-Rating Curve

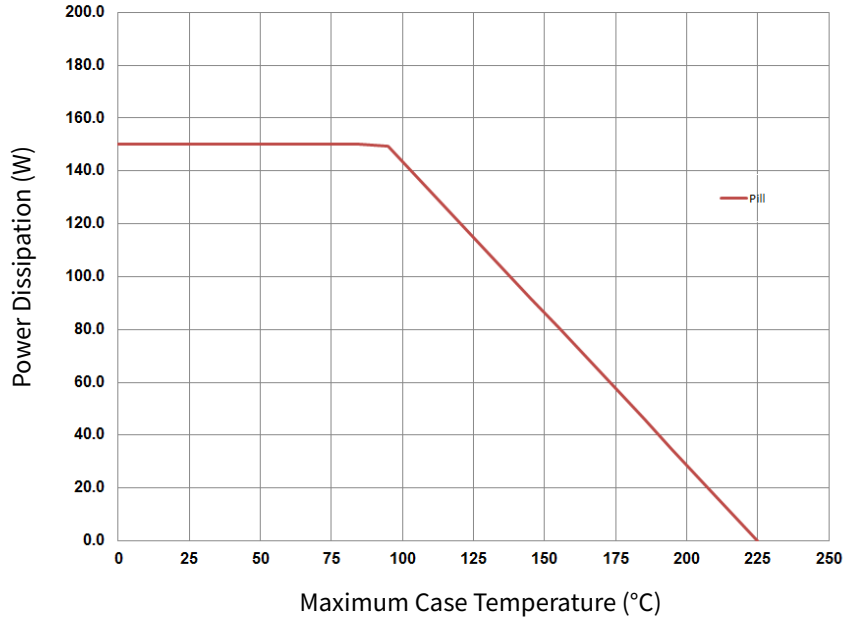
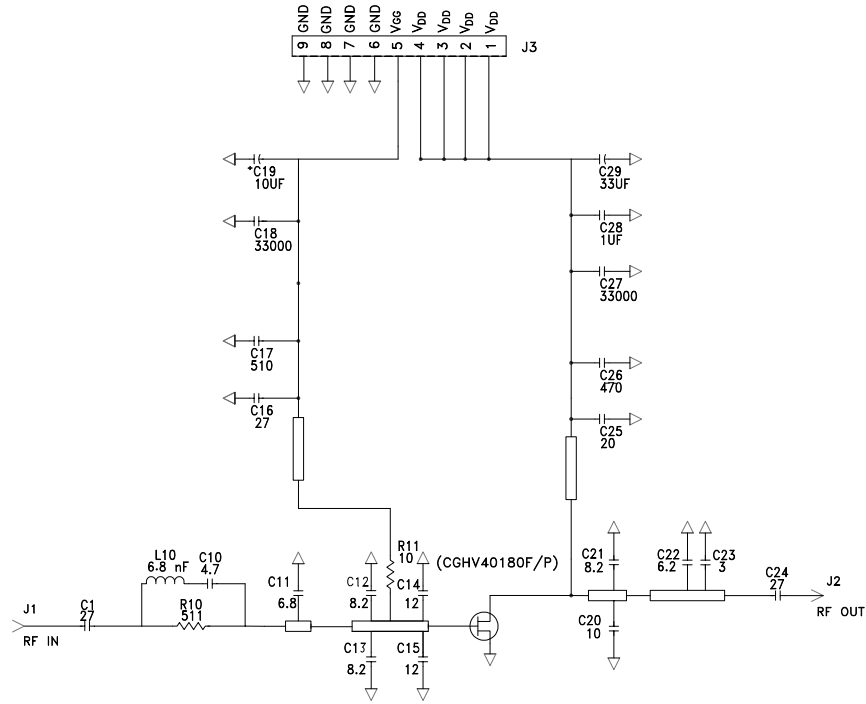
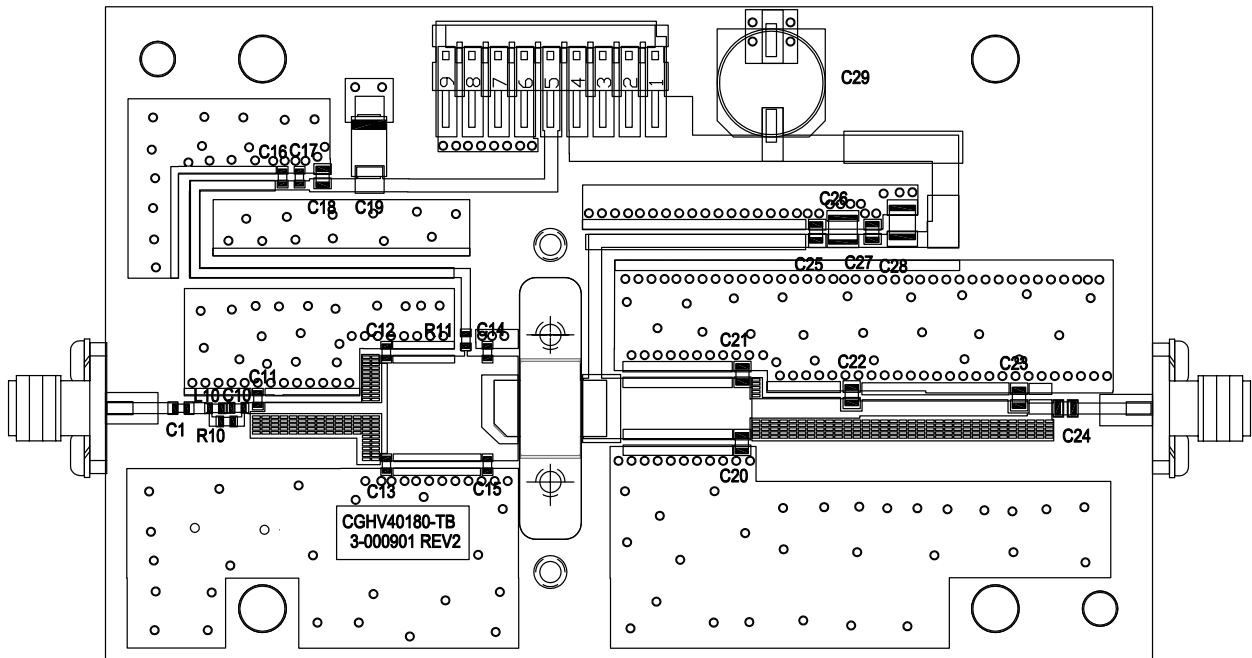


Figure 5. Transient Power Dissipation De-Rating Curve

### CGHV40180P-AMP Application Circuit Schematic



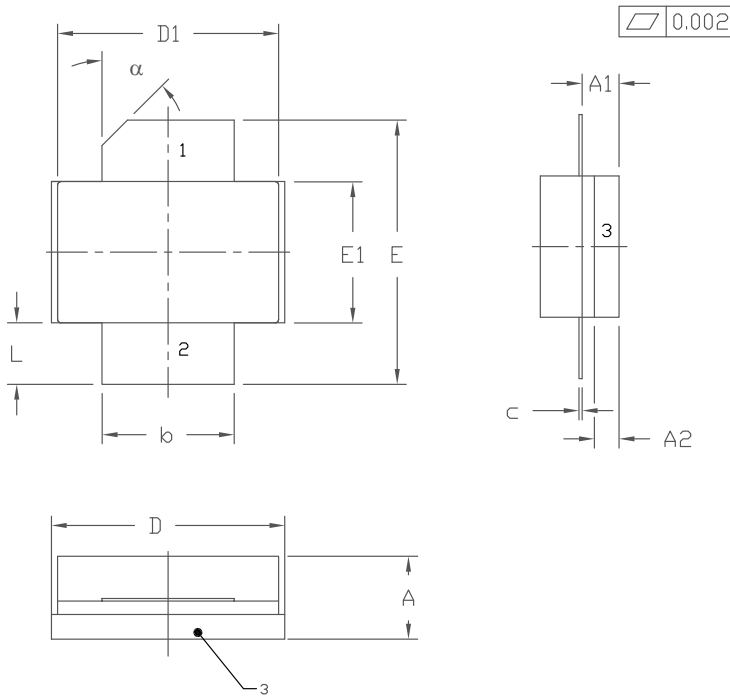
### CGHV40180P-AMP Application Circuit



## CGHV40180P-AMP Application Circuit Bill of Materials

| Designator | Description  | Qty |
|------------|--|-----|
| R11        | RES, 1/16 W, 0603, 1%, 10.0 OHMS                               | 1   |
| R10        | RES, 1/16 W, 0603, 1%, 511 OHMS                                | 1   |
| C29        | CAP, 33 UF, 20%, G CASE  | 1   |
| C28        | CAP 1.0 UF, 100 V, ±10%, X7R, 1210                             | 1   |
| C17        | CAP, 510 pF, NPO, 5%, 100 V, 0603                              | 1   |
| C26        | CAP, 470 pF, NPO, 5%, 250 V, ATC800B                           | 1   |
| C19        | CAP, 10 UF, 16 V TANTALUM, 2312                                | 1   |
| C14, C15   | CAP, 12.0 pF, ±5%, 0603, ATC600S                               | 2   |
| C1, C16    | CAP, 27 pF, ±5%, 0603, ATC600S                                 | 2   |
| C10        | CAP, 4.7 pF, ±0.1 pF, 0603, ATC600S                            | 1   |
| C11        | CAP, 6.8 pF, ±0.25 pF, 0603, ATC600S                           | 1   |
| C12, C13   | CAP, 8.2 pF, ±0.25 pF, 0603, ATC600S                           | 2   |
| C18, C27   | CAP, 33000 pF, 0805, 100 V, X7R                                | 2   |
| C20        | CAP, 10 pF, ±1%, 250 V, 0805, ATC600F                          | 2   |
| C25        | CAP, 20 pF, ±5%, 250 V, 0805, ATC600F                          | 1   |
| C24        | CAP, 27 pF, ±5%, 250 V, 0805, ATC600F                          | 1   |
| C23        | CAP, 3.0 pF, ±0.1pF, 250 V, 0805, ATC600F                      | 2   |
| C22        | CAP, 6.2 pF, ±0.1 pF, 250 V, 0805, ATC600F                     | 1   |
| C21        | CAP, 8.2 pF, ±0.1 pF, 250 V, 0805 ATC600F                      | 1   |
| -          | PCB ROGERS HTC6035, 0.020 THK, ER 3.60                         | 1   |
| J1, J2     | CONN, SMA, PANEL MOUNT JACK, FLANGE, 4 HOLE<br>BLUNT POST      | 2   |
| J3         | HEADER RT>PLZ .1 CEN LK 9 POS                                  | 1   |
| L10        | INDUCTOR, CHIP, 6.8 nH, 5%, 0603 SMT,<br>DIGIKEY 712-1432-1-ND | 1   |
| Q1         | CGHV40180  | 1   |

**Product Dimensions CGHV40180P (Package Type — 440206)**



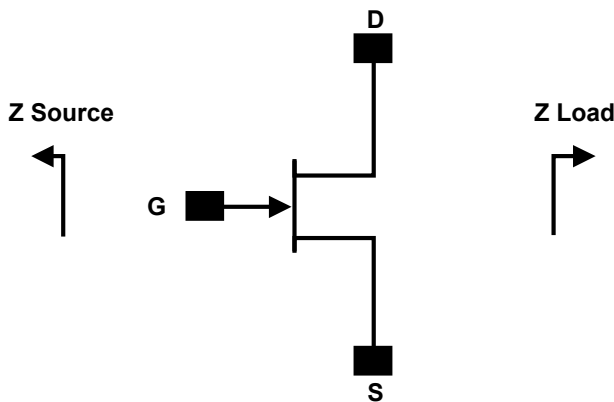
NOTES:

1. DIMENSIONING AND TOLERANCING PER ANSI Y14.5M - 1994.
2. CONTROLLING DIMENSION: INCH.
3. ADHESIVE FROM LID MAY EXTEND A MAXIMUM OF 0.020" BEYOND EDGE OF LID.
4. LID MAY BE MISALIGNED TO THE BODY OF PACKAGE BY A MAXIMUM OF 0.008" IN ANY DIRECTION.

| DIM      | INCHES |       | MILLIMETERS |       | NOTES |
|----------|--------|-------|-------------|-------|-------|
|          | MIN    | MAX   | MIN         | MAX   |       |
| A        | 0.125  | 0.145 | 3.18        | 3.68  |       |
| A1       | 0.057  | 0.067 | 1.45        | 1.70  |       |
| A2       | 0.035  | 0.045 | 0.89        | 1.14  |       |
| b        | 0.210  | 0.220 | 5.33        | 5.59  | 2x    |
| c        | 0.004  | 0.006 | 0.10        | 0.15  | 2x    |
| D        | 0.375  | 0.385 | 9.53        | 9.78  |       |
| D1       | 0.355  | 0.365 | 9.02        | 9.27  |       |
| E        | 0.400  | 0.460 | 10.16       | 11.68 |       |
| E1       | 0.225  | 0.235 | 5.72        | 5.97  |       |
| L        | 0.085  | 0.115 | 2.16        | 2.92  | 2x    |
| $\alpha$ | 45°    | REF   | 45°         | REF   |       |

- PIN 1. GATE  
 2. DRAIN  
 3. SOURCE

**Source and Load Impedances**



| Frequency (MHz) | Z Source     | Z Load     |
|-----------------|--------------|------------|
| 50              | 23.7 + J25.9 | 7.6 + J0.6 |
| 150             | 7.4 + J8.3   | 8.1 + J0.7 |
| 250             | 4.2 + J7.9   | 7.9 + J2.2 |
| 500             | 1.4 + J1.5   | 4.7 + J2.7 |
| 750             | 1.0 + J0.0   | 3.9 + J2.3 |
| 1000            | 0.7 + J1.1   | 4.0 + J1.8 |

Notes:

- <sup>1</sup>  $V_{DD} = 50\text{ V}$ ,  $I_{DQ} = 1.0\text{ A}$  in the 440206 package.
- <sup>2</sup> Optimized for power gain,  $P_{SAT}$  and drain efficiency.
- <sup>3</sup> When using this device at low frequency, series resistor should be used to maintain amplifier stability.

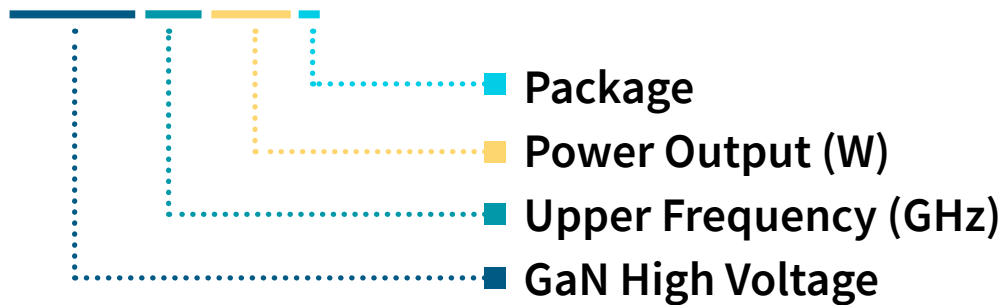
**Electrostatic Discharge (ESD) Classifications**

| Parameter           | Symbol | Class              | Test Methodology    |
|---------------------|--------|--------------------|---------------------|
| Human Body Model    | HBM    | 1 A (> 250 V)      | JEDEC JESD22 A114-D |
| Charge Device Model | CDM    | 2 (125 V to 250 V) | JEDEC JESD22 C101-C |



## Part Number System

# CGHV40180P



**Table 1.**

| Parameter                    | Value  | Units |
|------------------------------|--------|-------|
| Upper Frequency <sup>1</sup> | 4.0    | GHz   |
| Power Output                 | 180    | W     |
| Package                      | Flange | –     |

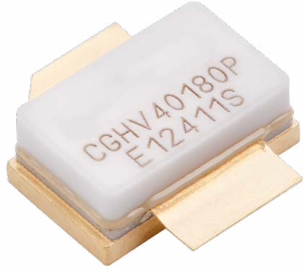
Note:

<sup>1</sup>Alpha characters used in frequency code indicate a value greater than 9.9 GHz. See Table 2 for value.

**Table 2.**

| Character Code | Code Value                       |
|----------------|----------------------------------|
| A              | 0                                |
| B              | 1                                |
| C              | 2                                |
| D              | 3                                |
| E              | 4                                |
| F              | 5                                |
| G              | 6                                |
| H              | 7                                |
| J              | 8                                |
| K              | 9                                |
| Examples:      | 1 A = 10.0 GHz<br>2 H = 27.0 GHz |

### Product Ordering Information

| Order Number   | Description                                  | Unit of Measure | Image   |
|----------------|--|-----------------|---|
| CGHV40180P     | GaN HEMT                                     | Each            |  |
| CGHV40180P-AMP | Test Board with GaN HEMT (Pill)<br>Installed | Each            |   |

## Notes & Disclaimer

---

MACOM Technology Solutions Inc. ("MACOM"). All rights reserved.

These materials are provided in connection with MACOM's products as a service to its customers and may be used for informational purposes only. Except as provided in its Terms and Conditions of Sale or any separate agreement, MACOM assumes no liability or responsibility whatsoever, including for (i) errors or omissions in these materials; (ii) failure to update these materials; or (iii) conflicts or incompatibilities arising from future changes to specifications and product descriptions, which MACOM may make at any time, without notice. These materials grant no license, express or implied, to any intellectual property rights.

THESE MATERIALS ARE PROVIDED "AS IS" WITH NO WARRANTY OR LIABILITY, EXPRESS OR IMPLIED, RELATING TO SALE AND/OR USE OF MACOM PRODUCTS INCLUDING FITNESS FOR A PARTICULAR PURPOSE, MERCHANTABILITY, INFRINGEMENT OF INTELLECTUAL PROPERTY RIGHT, ACCURACY OR COMPLETENESS, OR SPECIAL, INDIRECT, INCIDENTAL, OR CONSEQUENTIAL DAMAGES WHICH MAY RESULT FROM USE OF THESE MATERIALS.

MACOM products are not intended for use in medical, lifesaving or life sustaining applications. MACOM customers using or selling MACOM products for use in such applications do so at their own risk and agree to fully indemnify MACOM for any damages resulting from such improper use or sale.