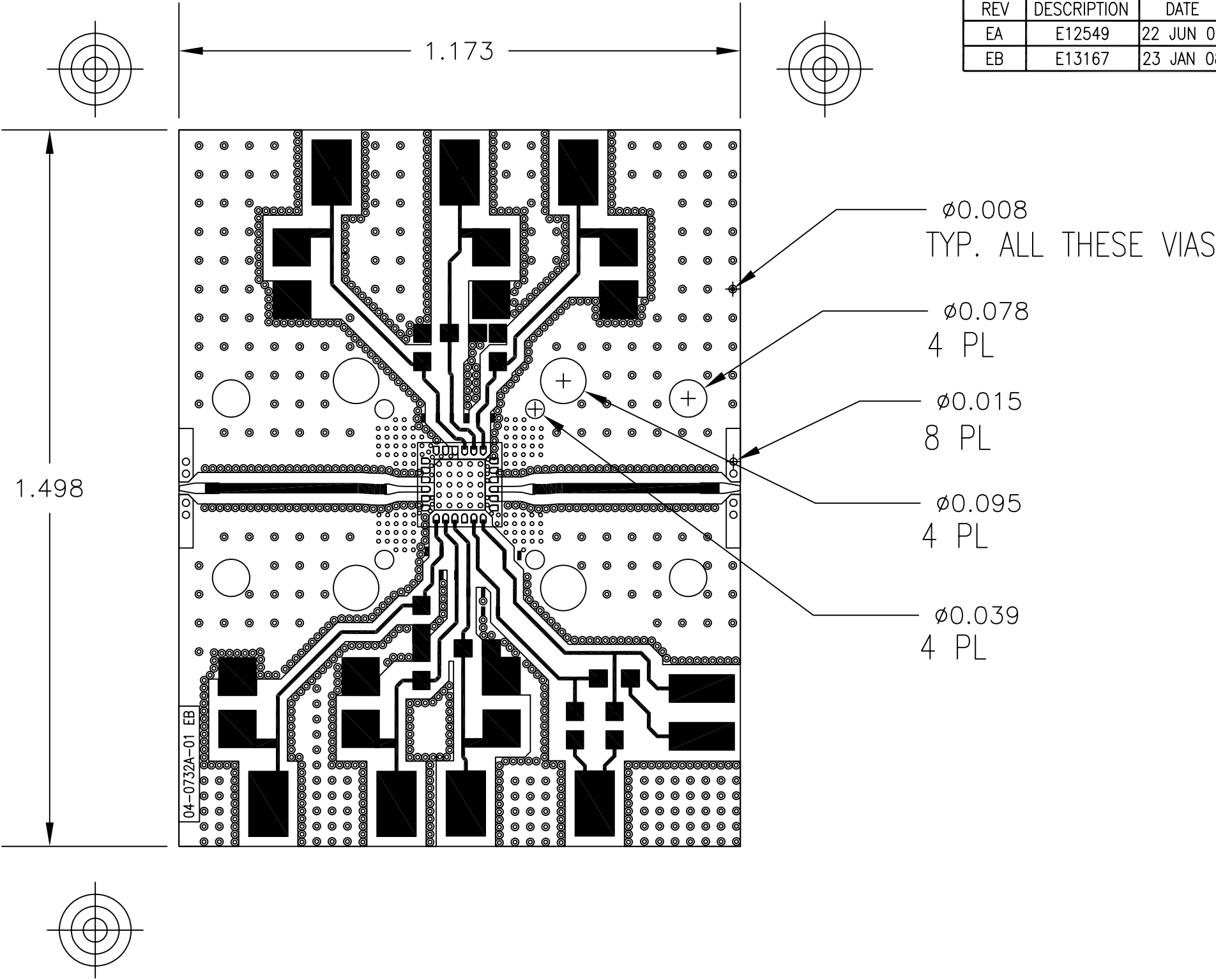



REVISION				
REV	DESCRIPTION	DATE	REV'D BY	APPROVED
EA	E12549	22 JUN 07	JRM	DAR
EB	E13167	23 JAN 08	JRM	DAR

NOTES: UNLESS OTHERWISE SPECIFIED

1. MATERIAL: ROGERS R0/4350B, Er= 3.48, 254 um  
1.0 OZ. COPPER BOTH SIDES,
2. BOARD WARPAGE: .010 INCH PER LINEAR INCH MAX
3. PLATE THRU HOLES WITH COPPER MINIMUM 35UM THICKNESS.
4. HOLE SIZE TOLERANCE +/- .003
5. ALL HOLES TO BE LOCATED WITHIN +/- .003 TRUE POSITION WITH RESPECT TO PAD
6. FRONT TO BACK REGISTRATION: +/- .003
7. LAYERS:  
TOP SIDE COPPER – Metal-1  
BOTTOM LAYER COPPER – Metal-2  
TOP SIDE SOLDER RESIST – Soldermask-top
8. FINISH – SOLDER MASK OVER BARE COPPER. SOLDER MASK PER SR1000 OR EQUIV. MASK MATERIAL. COLOR GREEN.
9. FINISH: GOLD PLATE PER MIL-G-45204, TYPE III, GRADE A, CLASS 1, 10-20 MICROINCHES MIN. OVER SULFAMATE NICKEL PER QQ-N-290, 75 MICROINCHES THICK.
10. THIS BOARD SHALL BE MANUFACTURED IN COMPLIANCE WITH IPC-A-600D AND OR IPC-RB-276.



UNLESS OTHERWISE SPECIFIED, DIMENSIONS ARE IN INCHES TOLERANCE:  +/- .002  ANGULAR +/- SURFACE: ALL OVER  MATERIAL: SEE NOTE 1	SIGNATURE	DATE	 10795 ROCKLEY ROAD, HOUSTON, TX 77099		
	DWN JRM	22 JUN 07			
	CHK D.KILPATRICK	22 JUN 07	TITLE FAB,PWB,4350,HAYABUSA PA,24LQFN4X4		
	ENG D.RICHARDSON	22 JUN 07			
	APVD D.RICHARDSON	22 JUN 07	SIZE B	CODE IDNT NO ODG54	DRAWING NO 04-0732A-01-FB
	PART NO 04-0732A-01		SCALE 1:1	REV EB	SHT 1 OF 1