

M/A-COM  
PROPRIETARY AND PRIVATE

The information contained in this document or item is the property of M/A-COM, Inc. and or its subsidiaries/affiliates (collectively "M/A-COM") and shall be kept in strict confidence, except with written permission of M/A-COM. Such information or items shall not be published, disclosed to others, or used for manufacture or sale, or for any purpose, and this document or item shall not be reproduced in whole or in part, if permission is granted, for reproduction, this legend shall be included in any such reproduction. This document or item shall be returned to M/A-COM upon request, or completion of the use for which it was made available to recipient, or termination of relationship with recipient, whichever first occurs. Any recipient so agrees by acceptance of this document or item.

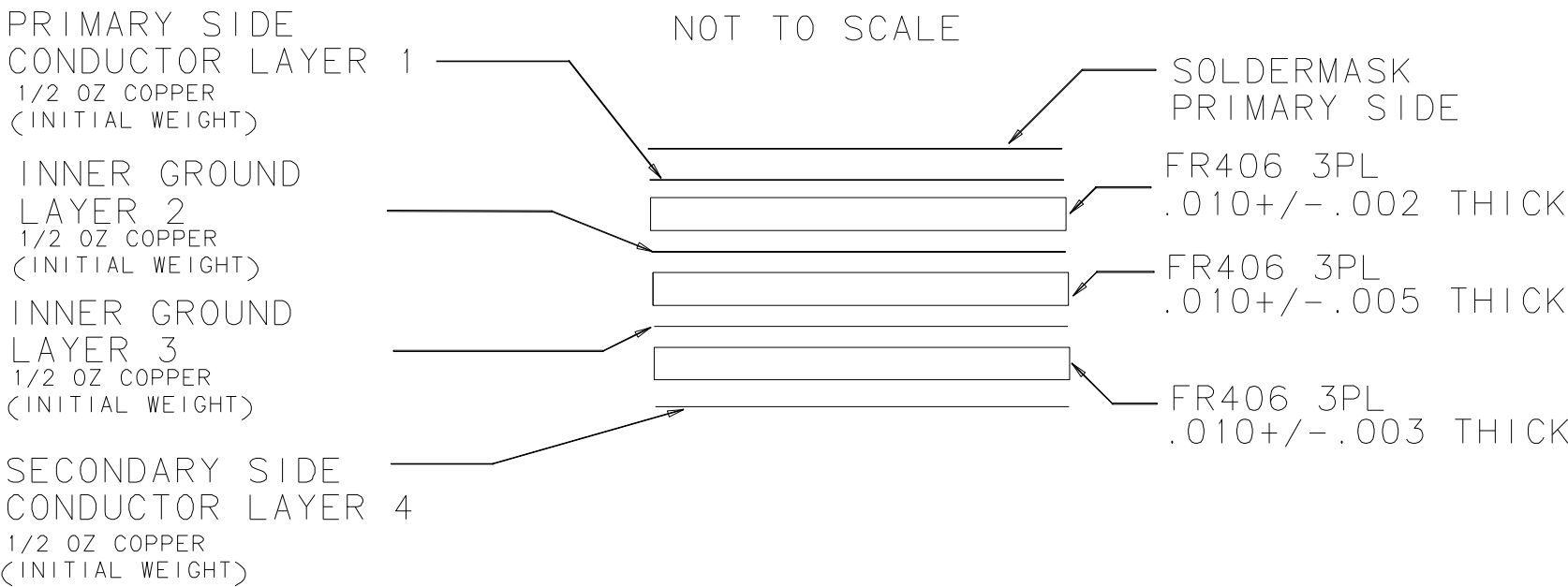


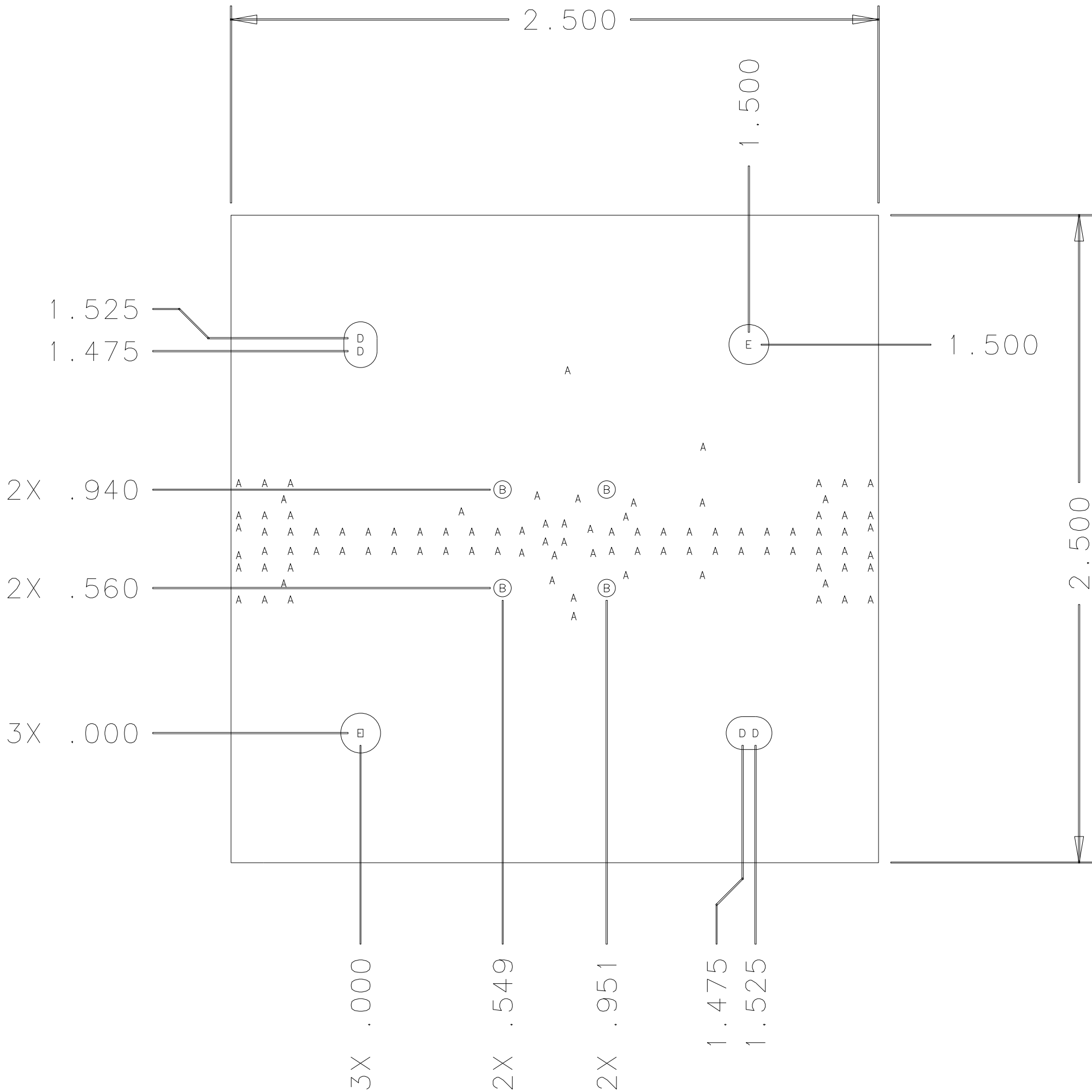
TABLE 1 DESCRIPTION	
N0	ARTWORK LEGEND
1	LYR 1 PRIMARY SIDE
2	LYR 2 INNER GROUND
3	LYR 3 INNER GROUND
4	LYR 4 SECONDARY SIDE
5	SOLDERMASK PRIMARY
6	SOLDERPASTE PRIMARY

NOTES:

- FABRICATE PER IPC-D-275 AS DESCRIBED BELOW.
- MATERIAL: FR406 .035+/- .005 THICK, NOT INCLUDING METAL. Br = 4.29, LOSS TANGENT = 0.014. (PBB/PBE SUBSTANCES SHALL NOT BE USED IN THE CONSTRUCTION OR FR4 MATERIAL OR EQUIVALENT).
- PLATED THRU HOLES SHALL HAVE A MINIMUM AVG COPPER THICKNESS OF .001 INCH, WITH AN ABSOLUTE MINIMUM THICKNESS OF .0008 INCH, AS MEASURED IN MIL-P-55110.
- UNLESS OTHERWISE SPECIFIED, ALL PLATED-THRU HOLES SHALL HAVE A TOLERANCE OF +/- .003
- UNLESS OTHERWISE SPECIFIED, ANY HOLE WHICH DOES NOT APPEAR ON THE VIA.RPT FILE SHALL BE NON-PLATED-THRU AND SHALL BE LOCATED VIA THIS DRAWING.
- FINISH: TOP AND BOTTOM METAL LAYER, 30+/-5 μINCHES IMMERSION TIN OVER 100-200 μINCHES NICKEL OVER COPPER OR 30+/-5 μINCHES IMMERSION TIN OVER COPPER.
- WARP AND TWIST NOT TO EXCEED .01 IN PER INCH.
- ALL COPLANAR MICROSTRIP LINES ARE CONTROLLED IMPEDANCE 18.2 MIL LINE WIDTH WITH 16 MIL SPACING SHALL BE 50 OHM +/-10%
- ON ALL COPLANAR OR FULLY METALIZED LAYERS, THE COPPER MAY BE RELIEVED FROM THE EDGES OF THE BOARD .025 MAX PER SIDE.
- SOLDERMASK TO BE LIQUID PHOTO IMAGEABLE EPOXY OVER BARE COPPER.
- SILKSCREEN WITH WHITE NON-CONDUCTIVE INK.
- LAYER REGISTRATION: SHALL BE WITHIN .003 ANY LAYER TO ANY OTHER LAYER, AS DEFINED IN MIL-P-55110.
- ETCH UL RATING, PWB MANUFACTURING LOGO AND DATE CODE (WEEK AND YEAR) ON SOLDER SIDE.
- ALL METAL LAYERS TO BE 1/2 OZ. COPPER.
- BOARDS SHALL BE SUPPLIED TO M/A COM IN 5 X 4 PANEL ARRAY PER SHEET 4 OF THIS DRAWING.
- ALL MATERIALS DESCRIBED IN THIS DOCUMENT/DRAWING SHALL BE IN COMPLIANCE WITH AND CONTAIN NO SUBSTANCES RESTRICTED OR REQUIRING SPECIAL RECLAMATION UNDER RoHS WEEE OR ELV DIRECTIVES (2002/95/EC, 2002/96/EC, 2000/53/EC).

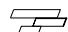


REVISIONS

REV	DESCRIPTION	DATE	APPROVED
-	DWG INITIATED PER EC020063642	2/2/07	C.W.
A	DWG CHANGED PER EC020063642	5/3/07	C.W.
B	DWG CHANGED PER EC020077043	5/08/08	C.W.



BOARD's HOLE SCHEDULE

HOLE SYMBOL	FINISHED HOLE SIZE	QTY	PLATED	Min/Max	TOOL
A	.014	94	YES	+/- .003	T1
B	.070	4	YES	+/- .003	T2
D	.128	4	YES	+/- .003	T4
E	.156	2	YES	+/- .003	T5

M/A SPECIFICATION S-100-101 APPLIES DO NOT SCALE THIS DRAWING		UNLESS OTHERWISE SPECIFIED DIMENSIONS ARE IN INCHES		DRAWN M. HORGAN		DATE 2/2/07		 Tyco Electronics  M/A-COM, Inc. 1011 Pawtucket Blvd Lowell, MA 01853-3295			
NOTE: THIS DRW INCORPORATES THIRD ANGLE PROJECTION		TOLERANCES ON		ENG. APP'D C. WEIGAND		2/2/07					
		DECIMALS		ANGLES		D.A. APP'D M. DONOGHUE		2/2/07			
		.X +/- .1 .XX +/- .02 .XXX +/- .005 .XXXX +/- .0005		.5		MFG. APP'D P. WADE		2/2/07			
		UNLESS OTHERWISE SPECIFIED <sup>63</sup> ALL OVER		APPROVALS							
		MATERIAL									
D-011700-XXX		SEE NOTE 2				SIZE		CAGE CODE		DRAWING NO.	
NEXT ASSY		FINISH				C		96341		1000031725-00000001	
APPLICATION		SEE NOTE 3				SCALE: NTS		WEIGHT 		SHEET: 1 OF 4	

4

3

2

1

D

C

B

1000031725-0000001

2

A

D

C

B

A

THIS SHEET IS COMPUTER GENERATED

4

3

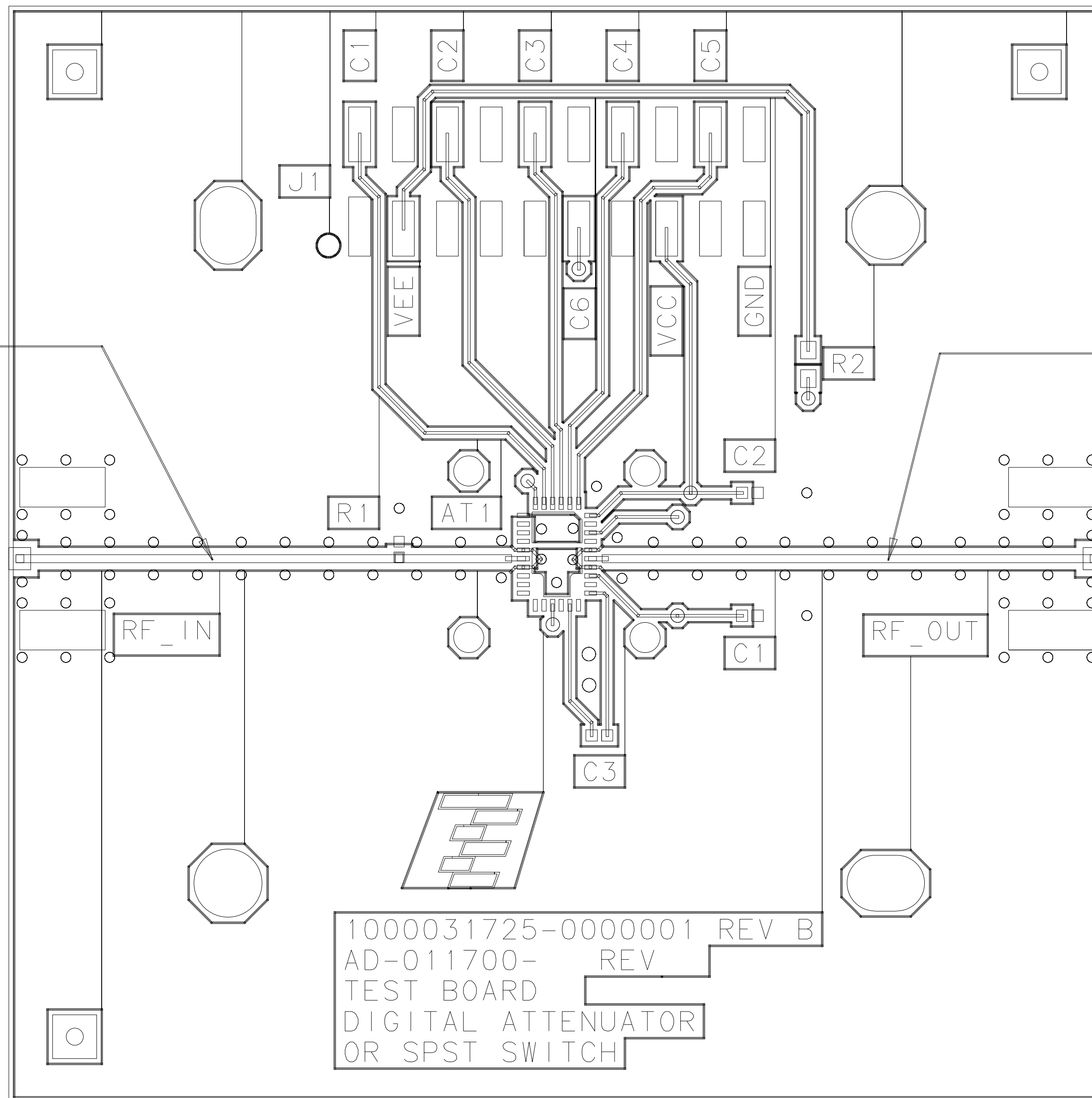
2

1

MENTOR GRAPHICS DATA BASE

RF LINE  
SEE NOTE 8

RF LINE  
SEE NOTE 8



1000031725-0000001 REV B  
AD-011700- REV  
TEST BOARD  
DIGITAL ATTENUATOR  
OR SPST SWITCH

PRIMARY SIDE LAYER 1



M/A-COM, Inc.  
1011 Pawtucket Blvd  
Lowell, MA 01853-3295

TITLE PC BOARD FABRICATION  
DIGITAL ATTENUATOR  
SAMPLE BOARD

SIZE	CAGE CODE	DRAWING NO.
C	96341	1000031725-0000001

SCALE:	NTS	WEIGHT	SHEET: 2 OF 4
REV: B	SEE SHEET 1 FOR DESCRIPTION		

4

3

2

1

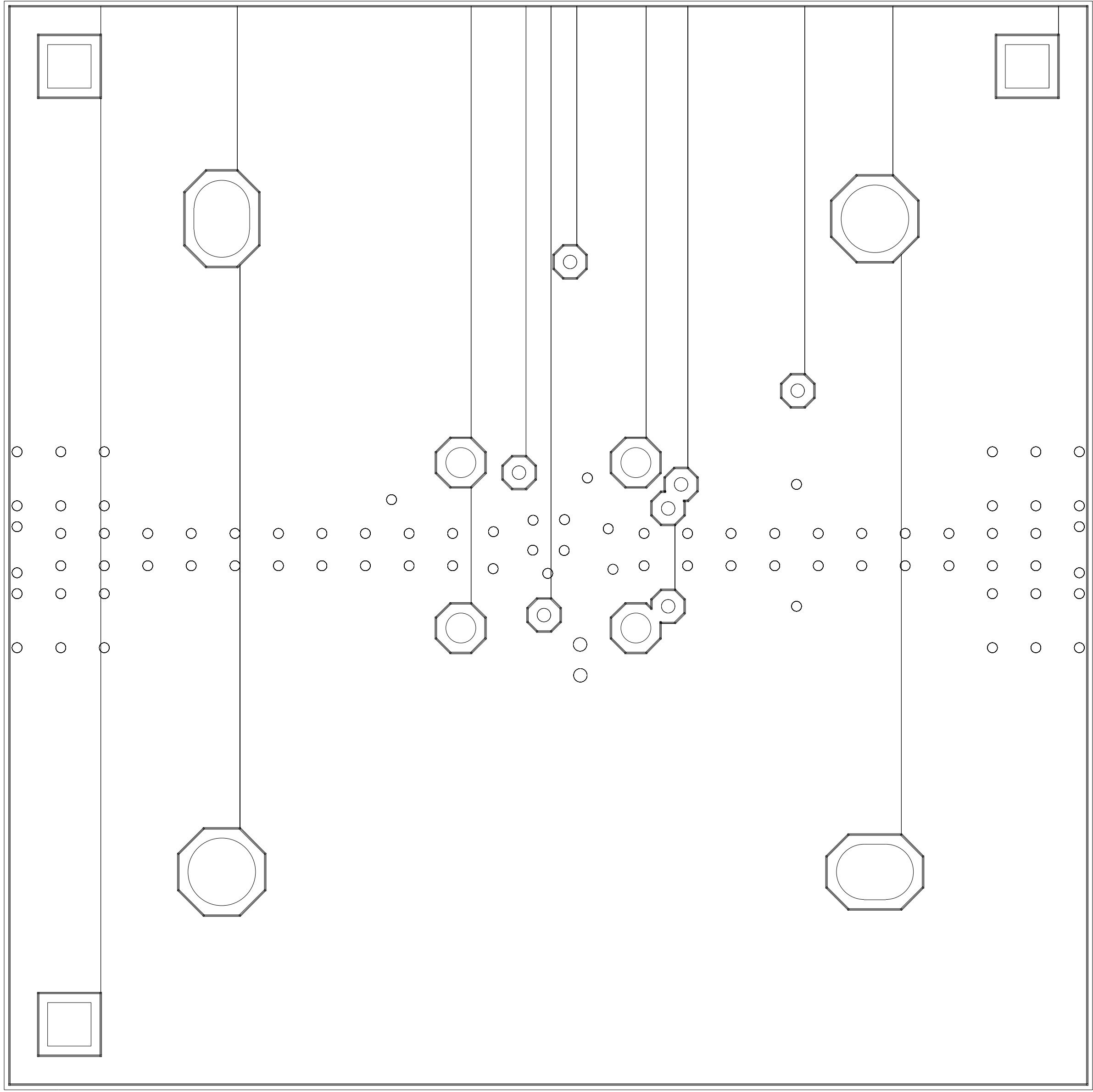
D

C

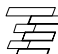
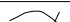
B

3

A



SECONDARY SIDE LAYER 4  
(AS VIEWED FROM THE BACK)

 Tyco Electronics			M/A-COM, Inc. 1011 Pawtucket Blvd Lowell, MA 01853-3295			
TITLE PC BOARD FABRICATION DIGITAL ATTENUATOR SAMPLE BOARD						
SIZE C	CAGE CODE 96341	DRAWING NO. 1000031725-0000001				
SCALE: REV: B	NTS	WEIGHT 	SHEET: 3 OF 4			
SEE SHEET 1 FOR DESCRIPTION						

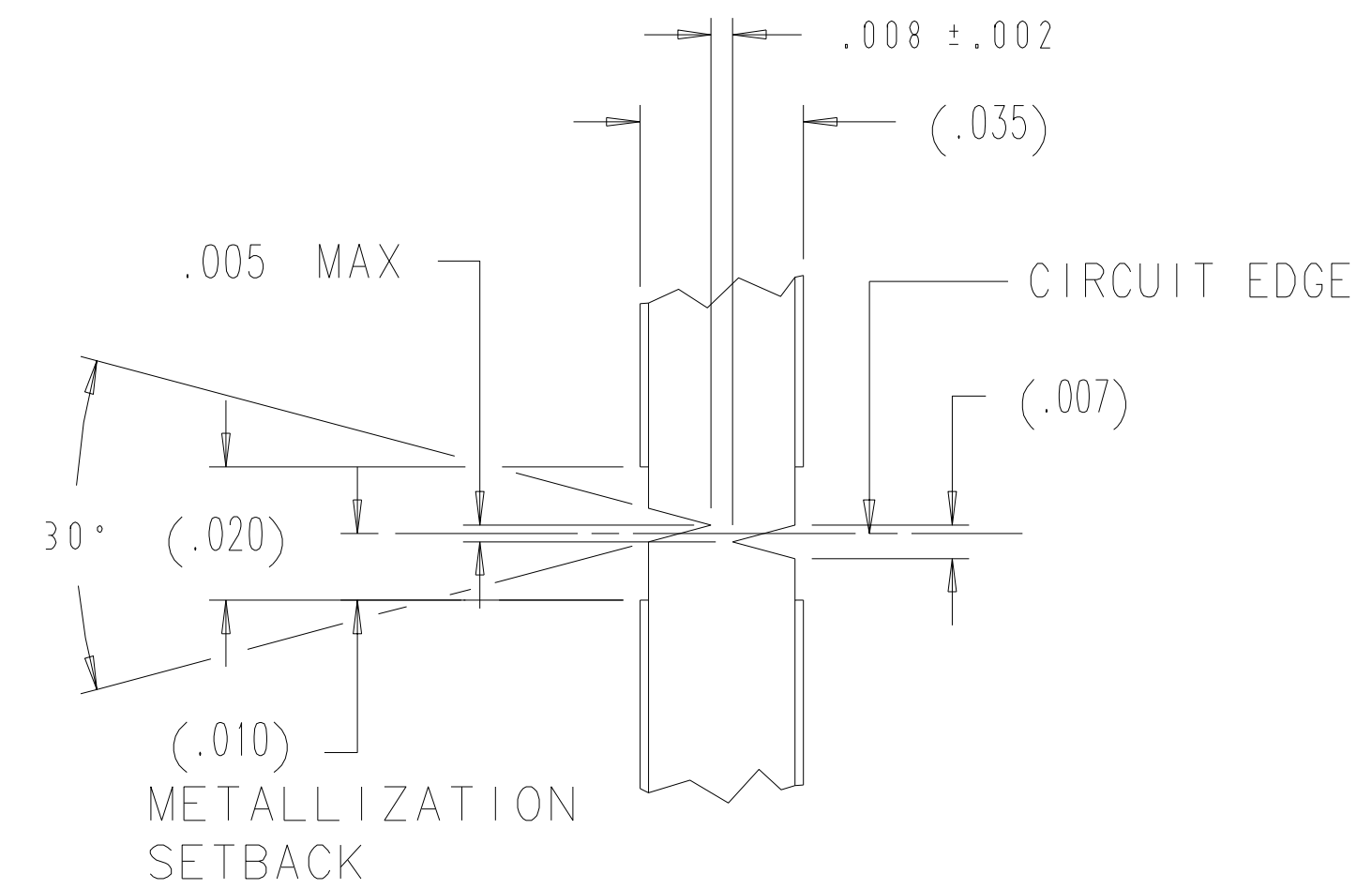
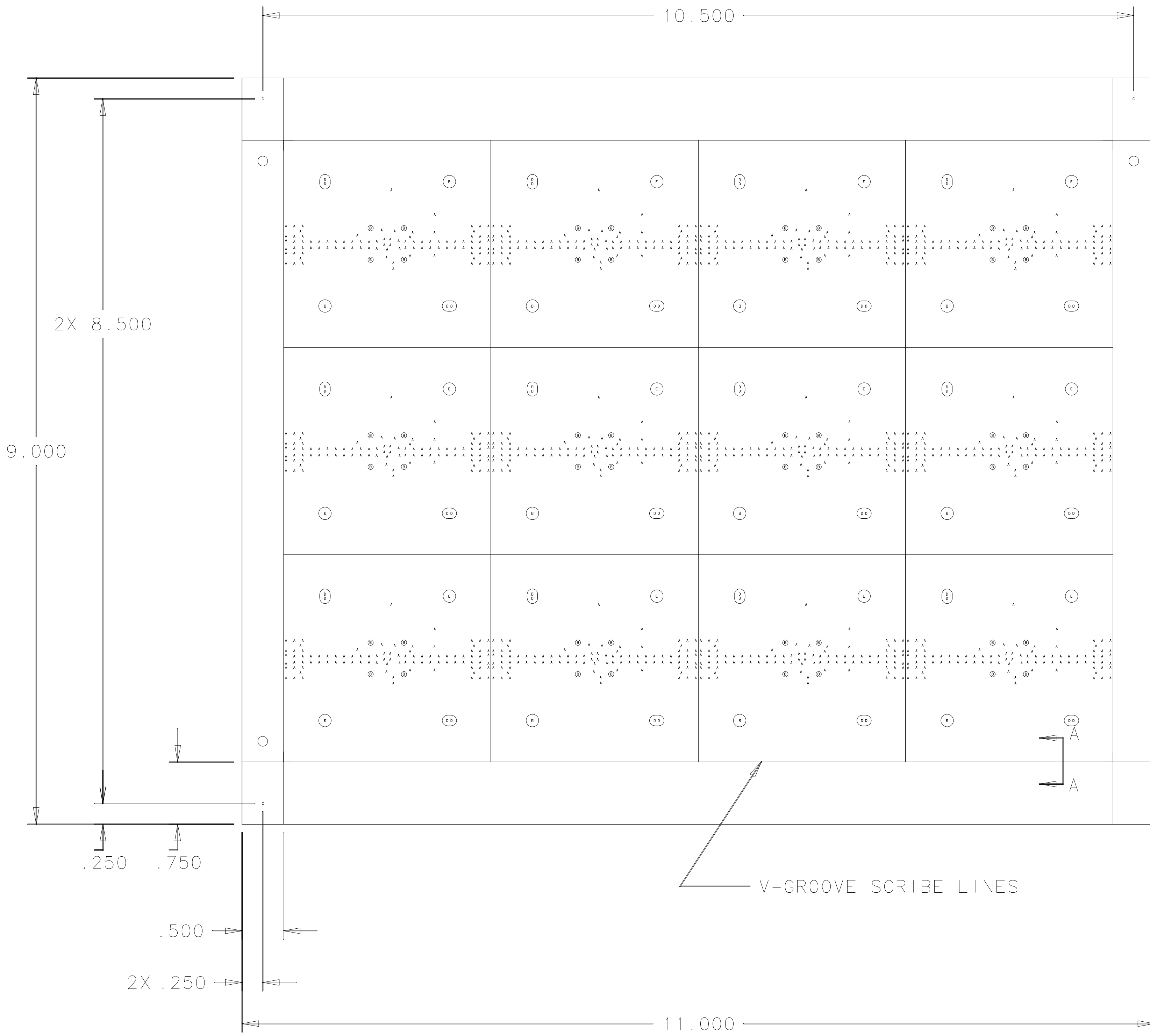
THIS SHEET IS COMPUTER GENERATED

A

B



C

D



PANEL's HOLE SCHEDULE					
HOLE SYMBOL	FINISHED HOLE SIZE	QTY	PLATED	Min/Max	TOOL
A	.014	1128	YES	+/- .003	T1
B	.070	48	YES	+/- .003	T2
C	.125	3	NO	+/- .003	T3
D	.128	48	YES	+/- .003	T4
E	.156	24	YES	+/- .003	T5

PANEL NOTES:  
1. THE THREE CIRCLES IN THE PANEL BORDER ARE FIDUCIALS. THEY ARE PRESENT ON ALL THE STEPPED ARTWORK LAYERS.

 Tyco Electronics		M/A-COM, Inc. 1011 Pawtucket Blvd Lowell, MA 01853-3295	
TITLE PC BOARD FABRICATION DIGITAL ATTENUATOR SAMPLE BOARD			
SIZE C	CAGE CODE 96341	DRAWING NO. 1000031725-0000001	
SCALE: NTS		WEIGHT 	SHEET: 4 OF 4
REV: B SEE SHEET 1 FOR DESCRIPTION			

A

C

D