

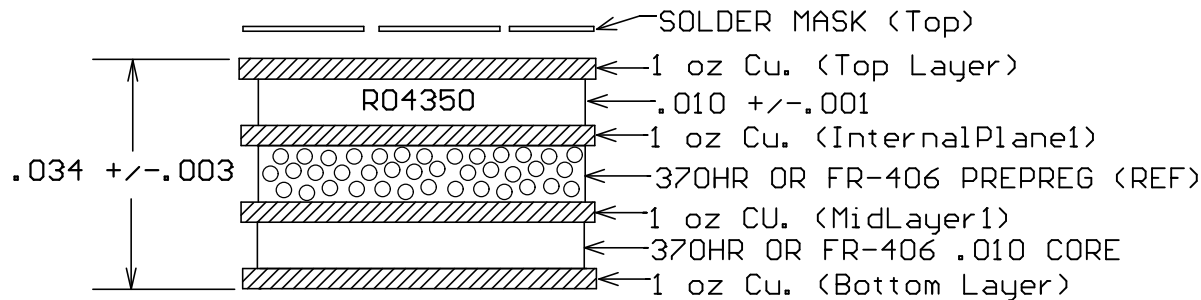
4

3

2

1

BOARD DIELECTRIC / COPPER STACKUP
FINISHED BOARD THICKNESS
(PRIOR TO TOP SOLDERMASK)

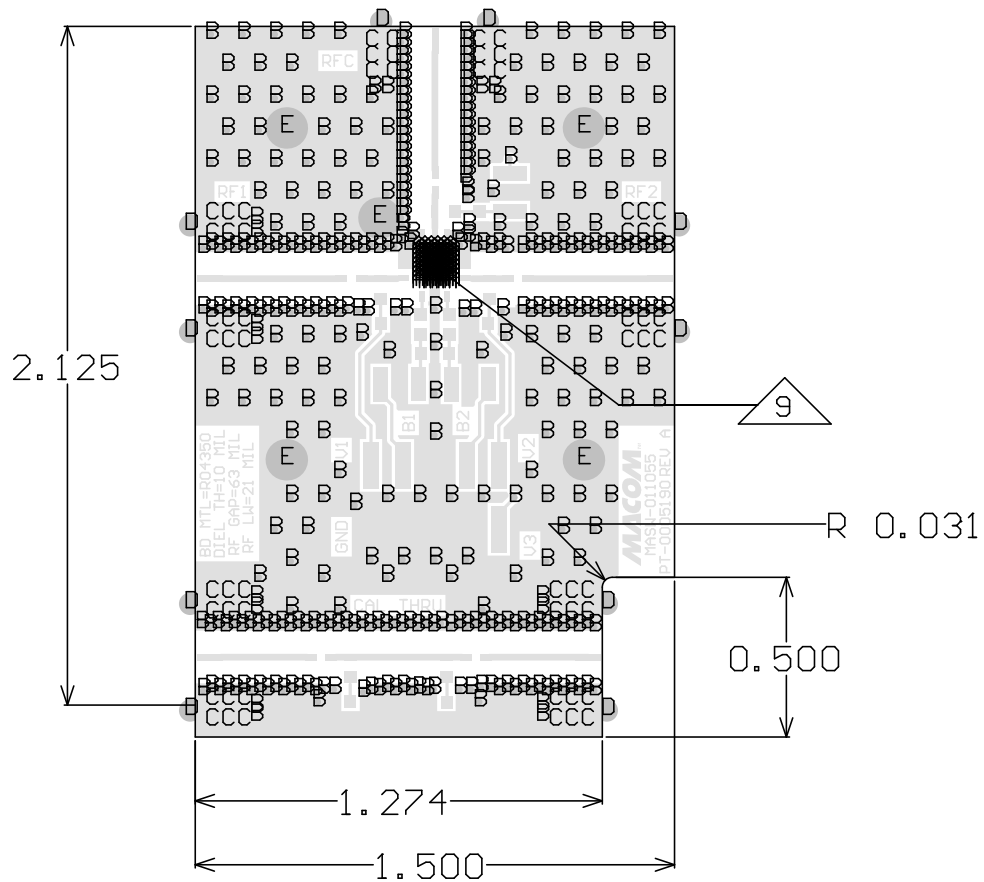


DETAIL 'A'

Symbol	Hit Count	FHS	Tolerance	Plated	Hole Type
A	102	5.00mil	Filled (Note 9)	PTH	Round
B	396	10.00mil	+3mils/-10mils	PTH	Round
C	60	18.00mil	+3mils/-18mils	PTH	Round
D	10	70.00mil	+/-3mils	PTH	Round
E	5	72.00mil	+/-3mils	PTH	Round
	573 Total				

NOTES:

- MATERIAL:
R04350 NOMINAL DIELECTRIC CONSTANT 3.48 AT 2.5 GHz, Tg>280C, DISSIPATION FACTOR = .0037.
370HR OR FR-406 DIELECTRIC MATERIAL STACKUP, THICKNESS, AND STARTING COPPER FOIL PER DETAIL 'A'.
- FINISH:
8-12 MICRO-INCHES IMMERSION GOLD OVER 100-200 MICRO-INCHES ELECTROLESS NICKEL OVER COPPER.
- PCB SHALL CONFORM TO IPC-A-600 CLASS 2.
- ALL HOLES TO BE PLATED THRU UNLESS OTHERWISE SPECIFIED.
- LPI SOLDER MASK COATING SHALL CONFORM TO IPC-SM-840, CLASS 2.
- MINIMUM LINE WIDTH AND SPACING IS 7.5 MIL, LINE WIDTHS ARE +/-1.5MILS.
- ELECTRONIC DATA IS EQUAL TO THE FINISHED LINE WIDTH.
- ALL FINISHED HOLE SIZES APPLY AFTER PLATING.
- ALL 5 MIL FHS SHALL BE COPPER FILLED AND PLATED OVER.
- COPPER PLATING IN THROUGH HOLES WILL BE .001" MINIMUM AVERAGE WITH AN ABSOLUTE MINIMUM OF .0007".
- DIMENSIONS SHOWN ARE FOR LOCATION OF 0,0 FOR THE DRILL FILE.
- EDGE CASILLATION VIAS, 0.070 FHS WALLS SHOULD BE FULLY PLATED.
- ALL MICROSTRIP LINES ON LAYER 1 ARE CONTROLLED IMPEDANCE. A 21 MIL LINE WITH A 63 MIL SPACING SHALL BE SHALL BE 50 OHMS +/-5% WITH REFERENCE TO THE GROUND PLANE ON LAYER 2 WITH A DIELETRIC OF 10 MILS.
- ALL MATERIALS DESCRIBED IN THIS DOCUMENT/DRAWING SHALL BE IN COMPLIANCE WITH AND CONTAIN NO SUBSTANCES RESRICTED OR REQUIRING SPECIAL RECLAMATION UNDER THE LATEST RoHS, WEEE OR ELV DIRECTIVES.



Board Outline

<div>UNLESS OTHERWISE SPECIFIED INTERPRET DRAWING PER ASME Y14.5 DO NOT SCALE THIS DRAWING</div> <div>NOTE: THIS DRW INCORPORATES THIRD ANGLE PROJECTION</div> <div></div> <div>M/A-COM Technology Solutions, INC. CONFIDENTIAL INFORMATION SUBJECT TO NDA</div> <div>The information contained in this document or material is the valuable and confidential property of M/A-COM Technology Solutions Holdings, Inc. and/or its subsidiaries or affiliates (collectively "MACOM"), provided to you subject to a non-disclosure agreement between you and MACOM solely for use in supporting MACOM's business as and to the extent MACOM authorizes in writing from time to time. This information shall be held in strictest confidence and shall not be reproduced, published, disclosed to others, or used for any purpose except as and to the extent specifically authorized by MACOM in a separate written agreement. If permission is granted for reproduction, this legend must be included in any and all copies. This document or material shall be promptly returned to MACOM or destroyed upon request, completion of the use for which it was made available to recipient, or termination of MACOM's relationship with recipient, whichever first occurs.</div>	UNLESS OTHERWISE SPECIFIED DIMENSIONS ARE IN INCHES		<div>MACOM Technology Solutions, Inc. 100 Chelmsford Street Lowell, MA 01851</div>	
	TOLERANCES ON			
	DECIMALS	ANGLES		
	.X ± .1 .XX ± .02 .XXX ± .005 .XXXX ± .0005	± 0.5°		
	UNLESS OTHERWISE SPECIFIED 63/ ALL OVER		TITLE	
MATERIAL		SIZE	CAGE CODE	DRAWING NO.
SEE NOTE 1		B	55NN2	PT-0005190
FINISH		SCALE:		
SEE NOTE 2		1/1		WEIGHT / SHEET 1 OF 1

4

3

2

1