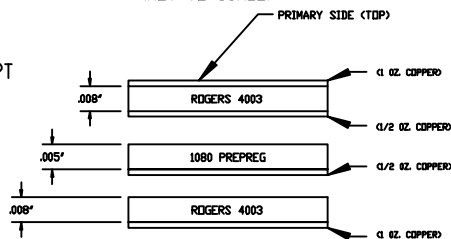


NOTES: UNLESS OTHERWISE SPECIFIED

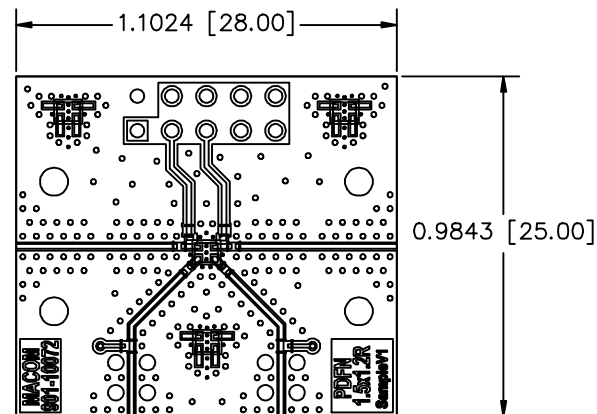
- MATERIAL: OUTER LAYERS ROGERS R04003, Er=3.55, H=8 mil
MIDDLE LAYER OF 1080 PREPREG, Er=3.63, H=5 mil
TOTAL THICKNESS 0.026 INCH
LAYER 1 METAL = 1 oz. COPPER
LAYER 2 METAL = 1/2 oz. COPPER
LAYER 3 METAL = 1/2 oz. COPPER
LAYER 4 METAL = 1 oz. COPPER
- BOARD WARPAGE: .1 mm PER LINEAR 10 mm MAX
- PLATE THRU HOLES WITH COPPER MINIMUM 25 UM THICKNESS.
ALL HOLE SIZES IN DRILL TABLE ARE AFTER PLATING.
- D3 0.2 mm VIAS IN DIE FLAG ARE FILLED WITH SILVER EPOXY, CB100.
- HOLE SIZE TOLERANCE +/- 75 UM
- ALL HOLES TO BE LOCATED WITHIN +/- 75 UM TRUE POSITION
WITH RESPECT TO PAD.
- LAYER TO LAYER REGISTRATION: +/- 75 UM
- LINE AND SPACE TOLERANCE +/- 25 UM TYP, +/- 50 UM MAX EXCEPT
AS NOTED.
- LAYERS:
TOP SIDE COPPER - LAYER 1
INTERMEDIATE COPPER 1 - LAYER 2
INTERMEDIATE COPPER 2 - LAYER 3
BOTTOM SIDE COPPER - LAYER 4
TOP SOLDERMASK - TOP SOLDERMASK
- FINISH: SOLDER MASK OVER BARE COPPER. SOLDER MASK PER
SR1000 OR EQUIV. MASK MATERIAL. COLOR GREEN
NO SOLDERMASK ON BOTTOM SIDE.
- FINISH: GOLD PLATE OVER NICKEL.
GOLD: PLATE PER MIL-G-45204C, TYPE III, GRADE A, CLASS 0
.030 MIL MIN
NICKEL: SULFAMATE NICKEL PER QQ-N-290, .075 MIL +/- 10%
- THIS BOARD SHALL BE MANUFACTURED IN COMPLIANCE WITH IPC-600A-G
- METAL ON LAYERS 2, 3, AND 4 MUST EXTEND TO PCB EDGE.
- 50 OHM TRANSMISSION LINE DIM : WIDTH = 344 +/- 13um GAP = 133 +/- 13um
- ADD "PT-0007870" TO ARTWORK IN PLACE OF "901-10072"
- ADD "REV_- " TO ARTWORK IN PLACE OF "SampleV1"

**CROSS SECTIONAL VIEW
(NOT TO SCALE)**



REVISIONS

REV	DESCRIPTION
-	DWG INITIATED PER CO-013626

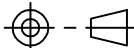


DRILL TABLE (mm)

REF.	DIA.	TOL.	QTY.	PLATING
D1	0.3800	+/- .08	227	THRU
D2	2.0580	+/- .08	4	THRU
D3	0.2000	+/- .08	43	THRU
D4	1.1430	+/- .08	8	THRU
D5	1.0000	+/- .08	10	THRU

UNLESS OTHERWISE SPECIFIED
INTERPRET DRAWING PER ASME Y14.5
DO NOT SCALE THIS DRAWING

NOTE: THIS DRW INCORPORATES
THIRD ANGLE PROJECTION



M/A-COM Technology Solutions, Inc.
CONFIDENTIAL INFORMATION SUBJECT TO NDA

The information contained in this document or material is the valuable and confidential property of M/A-COM Technology Solutions Holdings, Inc. and/or its subsidiaries or affiliates (collectively "MACOM"), provided to you subject to a non-disclosure agreement between you and MACOM solely for use in supporting MACOM's business as and to the extent MACOM authorizes in writing from time to time. This information shall be held in strictest confidence and shall not be reproduced, published, disclosed to others, or used for any purpose except as and to the extent specifically authorized by MACOM in a separate written agreement. If permission is granted for reproduction, this legend must be included in any and all copies. This document or material shall be promptly returned to MACOM or destroyed upon request, completion of the use for which it was made available to recipient, or termination of MACOM's relationship with recipient, whichever first occurs.

UNLESS OTHERWISE SPECIFIED
DIMENSIONS ARE IN INCHES

TOLERANCES ON

DECIMALS	ANGLES
.X ± .1	±0.5°
.XX ± .02	
.XXX ± .005	
.XXXX ± .0005	

UNLESS OTHERWISE SPECIFIED
63/ ALL OVER

MATERIAL See Notes

FINISH See Notes

MACOM

MACOM Technology Solutions, Inc.
100 Chalmersford Street
Lowell, MA 01851

TITLE

FABRICATION, SMB, MAMX-011023

SIZE	CAGE CODE	DRAWING NO.
A	55NN2	PT-0007870
SCALE:	2/1	WEIGHT / SHEET 1 OF 1