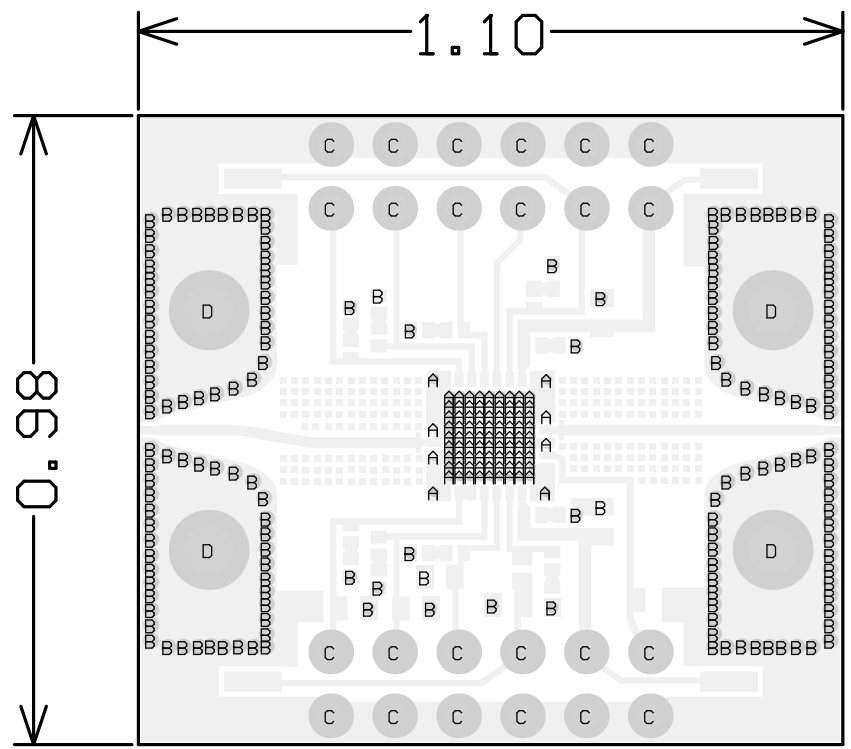


Symbol	Hit Count	FHS	Tol.	Plated	Hole Type
A	89	8.00mil	+/-3mil	PTH AND FILL	Round
B	168	12.00mil	+3/-12mil	PTH	Round
C	24	40.00mil	+/-3mil	PTH	Round
D	4	78.00mil	+/-3mil	PTH	Round
	285 Total				



- NOTES:
- MATERIAL:
R04003C: SEE DETAIL 'A'
STARTING COPPER FOIL ON PRIMARY AND SECONDARY SHALL BE 0.5 OZ.
MATERIAL STACKUP AND THICKNESS PER DETAIL 'A'.
 - FINISH: PRIMARY AND SECONDARY SIDE FINISH;
ELECTROLESS NICKEL/IMMERSION GOLD (ENIG) PER IPC-4552.
ELECTROLESS NICKEL: 118-236 MICRO-INCHES [3.0-6.0 MICRONS]
IMMERSION GOLD: 2-6 MICRO-INCHES [0.051-0.152 MICRONS]
THERE SHALL BE NO PITS, PIN HOLES OR NODULES WITHIN EXPOSED METAL AREAS.
 - ELECTRONIC DATA IS EQUAL TO THE FINISHED LINE WIDTH.
 - PCB SHALL BE FABRICATED PER IPC-6012 CLASS 2 AND CONFORM TO IPC-A-600 CLASS 2 LATEST REVISIONS.
 - ALL HOLES TO BE PLATED THRU UNLESS OTHERWISE SPECIFIED.
ALL FINISHED DRILL HOLE SIZES APPLY AFTER PLATING.
COPPER PLATING IN THROUGH HOLES WILL BE 0.002" AVERAGE WITH AN ABSOLUTE MINIMUM OF 0.0007".
DIMENSIONS SHOWN ARE FOR LOCATION OF 0,0 FOR THE DRILL FILE.
 - ALL 8.0 MIL VIA HOLES SHALL BE COMPLETELY FILLED WITH SOLID COPPER, AND PLANARIZED FLAT.
 - SOLDERMASK SHALL BE SMOBC. LPI SOLDERMASK COATING SHALL CONFORM TO IPC-SM-840, CLASS T. SOLDERMASK ON PRIMARY SIDE ONLY. COLOR GREEN.
 - SILKSCREEN ON PRIMARY SIDE. SILKSCREEN SHALL BE WHITE
NON-CONDUCTIVE EPOXY INK. REMOVE ANY SILKSCREEN ON EXPOSED COPPER OR PADS.
 - ALL MATERIALS DESCRIBED IN THIS DOCUMENT/DRAWING SHALL BE IN COMPLIANCE WITH AND CONTAIN NO SUBSTANCES RESTRICTED OR REQUIRING SPECIAL RECLAMATION UNDER THE LATEST RoHS, WEEE OR ELV DIRECTIVES.

X	MAAP-011327
NEXT ASSY	USED ON
APPLICATION	

<div>UNLESS OTHERWISE SPECIFIED INTERPRET DRAWING PER ASME Y14.5 DO NOT SCALE THIS DRAWING</div>	<div>UNLESS OTHERWISE SPECIFIED DIMENSIONS ARE IN INCHES</div>		<div><div>MACOM</div><div>WWW.MACOM.COM</div></div>				
	<div>TOLERANCES ON</div>						
	<div>NOTE: THIS DRW INCORPORATES THIRD ANGLE PROJECTION</div>	<div>DECIMALS</div>	<div>ANGLES</div>	<div>TITLE</div> <div>PRINTED BOARD, SAMPLE, 5mmAQFN32, 901-10090</div>			
<div></div>	<div>.X ±.1 .XX ±.02 .XXX ±.005 .XXXX ±.0005</div>	<div>±0.5</div>					
<div>MACOM Technology Solutions CONFIDENTIAL INFORMATION SUBJECT TO NDA</div>	<div>UNLESS OTHERWISE SPECIFIED 63 ALL OVER</div>						
<div>The information contained in this document or material is the valuable and confidential property of MACOM Technology Solutions Holdings, Inc. and/or its subsidiaries or affiliates. Collectively MACOM, provided to you subject to a non-disclosure agreement between you and MACOM solely for use in supporting MACOM's business as and to the extent MACOM authorizes in writing from time to time. This information shall be held in strictest confidence and shall not be reproduced, published, disclosed to others, or used for any purpose except as and to the extent specifically authorized by MACOM in a separate written agreement. If permission is granted for reproduction, this legend must be included in any and all copies. This document or material shall be promptly returned to MACOM or destroyed upon request, completion of the use for which it was made available to recipient, or termination of MACOM's relationship with recipient, whichever first occurs.</div>	<div>MATERIAL</div>	<div>SIZE</div>	<div>DRAWING NO.</div>				<div>REVISION</div>
<div>SEE NOTE 1</div>	<div>B</div>	<div>PT-0029477</div>	<div>—</div>				
<div>FINISH</div>	<div>SEE NOTE 2</div>	<div>SCALE:</div>	<div>PACKAGE TYPE:</div>	<div>SHEET 1 OF 1</div>			
		<div>1/1</div>	<div>5mmAQFN50P_32LD</div>				